

OREGON CORNER RESTORATION FORM

Section 16 Township 4N Range 28E

L-13

County UMATILLA Date 11/95

CORNER DESIGNATION

E 1/4 cor

- Condition Report Only
- Not Found
- Renewed
- Unrecorded
- Surveyed In
- Referenced Out

Previous Renewals/Surveys, etc. ORIG. SURVEYED IN 1860 BY HAFT
CONTRACT # 93

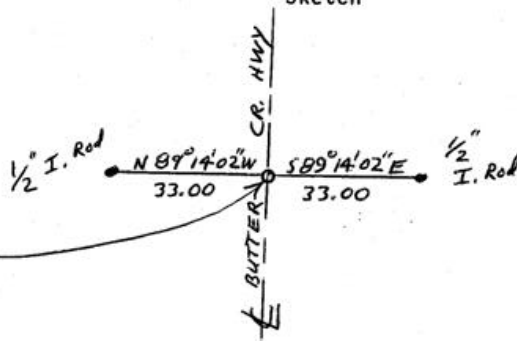
Monument(s) & Accessories Found: (Condition and Source)

Ends 1/2" I.Rod W.C.s 33 feet East & 33 feet West
ORIG. UNKNOWN

Monument Detail



Sketch



Monument Set (Procedures and Description)

From the two 1/2" Iron Rods I set a 5/8" X 30" Rebar
with a 2" Alum Cap Stamped as above & Flush
with the pavement

SEE MY SURVEY FOR COLUCCIO

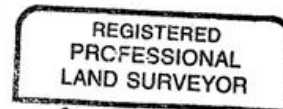
New Accessories

An Alum tag # 951 in Power Pole Bears S74°19'27"W 31.70 Feet
An Alum tag # 951 in RR Tie F.Post Bears S80°52'44"E 43.43 Feet

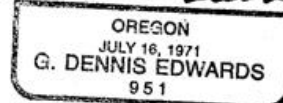
Location & Comments

From intersection Compass Declination _____
of HIGHLAND AVE & Firm/Agency EDWARDS
Butter Cr. Hwy go SURVEYING
South on Butter Cr. Address P.O. Box 763
Hwy 1/2 mile to HERMISTON, OR 97038
Corner. Party Chief D. Edwards
 Notes _____
 Witness J. Coppock

Surveyor's Seal



G. Dennis Edwards



RENEWS 12/31/95

09-39-A