

# OREGON CORNER RESTORATION FORM

SECTION 13,18 TOWNSHIP 4 NORTH RANGE 28,29 EAST L-25  
 COUNTY : UMATILLA DATE AUG/21

CORNER DESIGNATION  
 1/4 CORNER

- CONDITION REPORT ONLY
- NOT FOUND
- RENEWED
- UNCOVERED
- SURVEYED IN
- REFERENCED

PREVIOUS RENEWALS / SURVEYS, ETC.

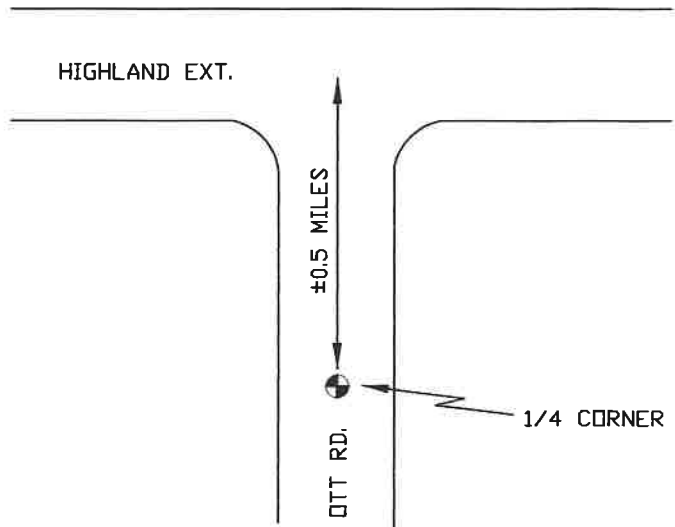
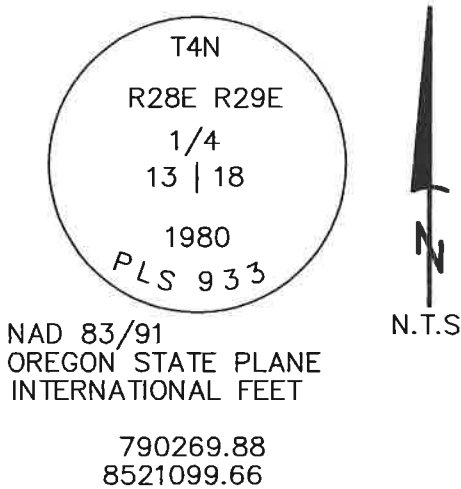
SURVEYED IN 1860 BY CAMPBELL. LS 933 RESET THIS MONUMENT IN 1980. SEE RECORD OF SURVEY S-156-C

MONUMENTS AND ACCESSORIES FOUND: CONDITION AND SOURCE

I RECOVERED THE CORNER AND COMPARED ITS LOCATION WITH DUAL MONUMENTATION IN THE AREA AS REQUESTED. PLEASE REFER TO TO RECORD OF SURVEY THAT WAS RECORDED ALONG WITH THIS CORNER RESTORATION FORM FOR MY ANALYSES. THE ACCESSORIES FOR THE CORNER WERE NOT RECOVERED DURING THIS SURVEY DUE TO THE FACT IT HAD NO BEARING ON THE CORNERS LOCATION. PLEASE REFER TO SURVEY NUMBER 19-080-C AND THE CORNER RESTORATION FORMS RECORDED WITH SAID RECORD OF SURVEY FOR ACCESSORY INFORMATION.

MONUMENT DETAIL

SKETCH



MONUMENT SET ( PROCEDURES AND DESCRIPTION )

NEW ACCESSORIES FROM WHICH

LOCATION AND COMMENTS

FROM THE INTERSECTIONS OF HIGHLAND EXT. AND OTT ROAD GO SOUTH ON OTT ROAD ±0.5 MILES TO THE CORNER.

FIRM/AGENCY

PRIMM LAND SURVEYING, INC.  
 P.O. BOX 1322  
 HERMISTON, OREGON 97838

SURVEYOR'S SEAL

LAND SURVEYOR  
 BRIT L. PRIMM

REGISTERED  
 PROFESSIONAL  
 LAND SURVEYOR

WITNESS  
 KEITH P. PRIMM

*Brit L. Primm*  
 OREGON  
 JULY 13, 1999  
 BRIT L. PRIMM  
 48509

EXPIRATION DATE: 12/31/22