

CORNER RESTORATION FORM

Section 18/17

Township 4 North

Range 28E

County Umatilla

Date March 27, 2000

Corner Designation L-5

Location and Comments

From the intersection of westland and Agnew Roads west of Hermiston, travel north 1/2 mile. The corner is a railroad spike buried approximately 6 inches below the road surface.

Surveyor's Seal

**REGISTERED
PROFESSIONAL
LAND SURVEYOR**

Gary R. Roberts

**OREGON
JULY 20, 1993
GARY R. ROBERTS
2627**

Condition Report Only

Not Found

Renewed

Unrecorded

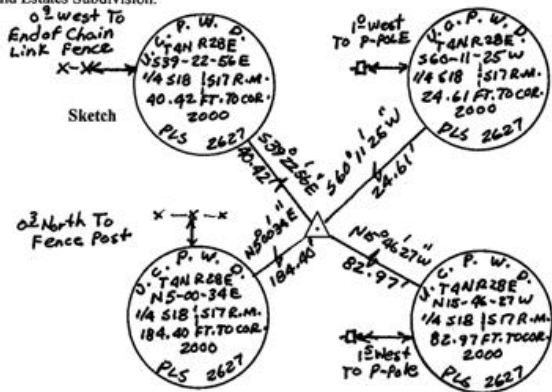
Surveyed In

Referenced Out

Previous Renewals/Surveys, etc. Ebenezer Haft, under Contract No. 93, dated September 11, 1860, set a post in a mound with trench and pits and deposited 1 pint of charcoal. No remaining evidence found. Don Staebler shows a single proportion 1/4 corner on his 1972 plat of Westland Estates, but doesn't show any monument being found or set. Ron McKinnis found an unrecorded railroad spike buried in Agnew Road in November, 1995 (Survey #96-06-B).

Monuments & Accessories Found: (Condition and Source) Found the railroad spike referred to in McKinnis' survey approximately 6" below the surface of Agnew Road. I accepted it as the 1/4 corner based upon its nearness to the single proportion calculated point between the section corners to the north and south and based upon its relatively good agreement with nearby lot corner monuments set in the Westland Estates Subdivision.

Monument Detail



Monument Set (Procedures and Description) The unmarked railroad spike was left in its found position and no new monument was set at the corner point, as Agnew Road is scheduled for reconstruction. A new corner monument will be set at a later date.

Compass Declination N/A
Firm/Agency Umatilla County
Department of Public Works

Address 3920 Westgate
Pendleton, Oregon 97838
Party Chief Gary Roberts
Notes Wynell Roberts
Witness Wynell Roberts

New Accessories A 5/8" X 30" iron rebar with 2" aluminum cap marked as shown in sketch above was set in each quadrant. Do Not Disturb Nearby Survey Marker tags attached nearby.

RECEIVED BY

Umatilla County Surveyor
Date 5-2000
Rec'd By KR
No. 00-97-C