

CORNER RESTORATION FORM

Township 4N Range 28E Section 36 County UMATILLA

State OREGON Date 6-26-2019 Number Z-23

Corner Designation : S1/4 36

Condition Report Only

Not Found

Renewed

Surveyed In

Referenced

Previous Renewals ORIGINAL SOURCE OF CORNER

ORIGINALLY SURVEYED IN 1860 BY HAFT UNDER CONTRACT #93. HE SET

POST IN MOUND WITH TRENCH, MADE PITS AND DEPOSITED A PINT OF

CHARCOAL.

MONUMENT DETAIL

Found Set

Accessories Found:

FOUND BRASS CAP WITNESS CORNER MARKED 1980 PLS 933, N88°00'E, 5.20 FT., AS

PER COUNTY SURVEY Z-23-02-185-G & S-156-C.

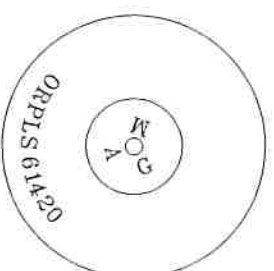
FOUND BRASS CAP WITNESS CORNER MARKED 1980 PLS 933, N89°00'W, 13.26 FT.,

AS PER COUNTY SURVEY Z-23-02-185-G & S-156-C.

BASIS OF BEARINGS, NAD 83/91 OREGON STATE PLANE
NORTH ZONE:

NORTHING: 771790.30

EASTING: 8518748.26



Monument & Accessories Set (Procedure and Description)

SET A MAG NAIL AND WASHER MARKED PLS 61420 IN THE TOP OF A 24" CMP, AT THE ESTABLISHED BUT UN-MONUMENTED

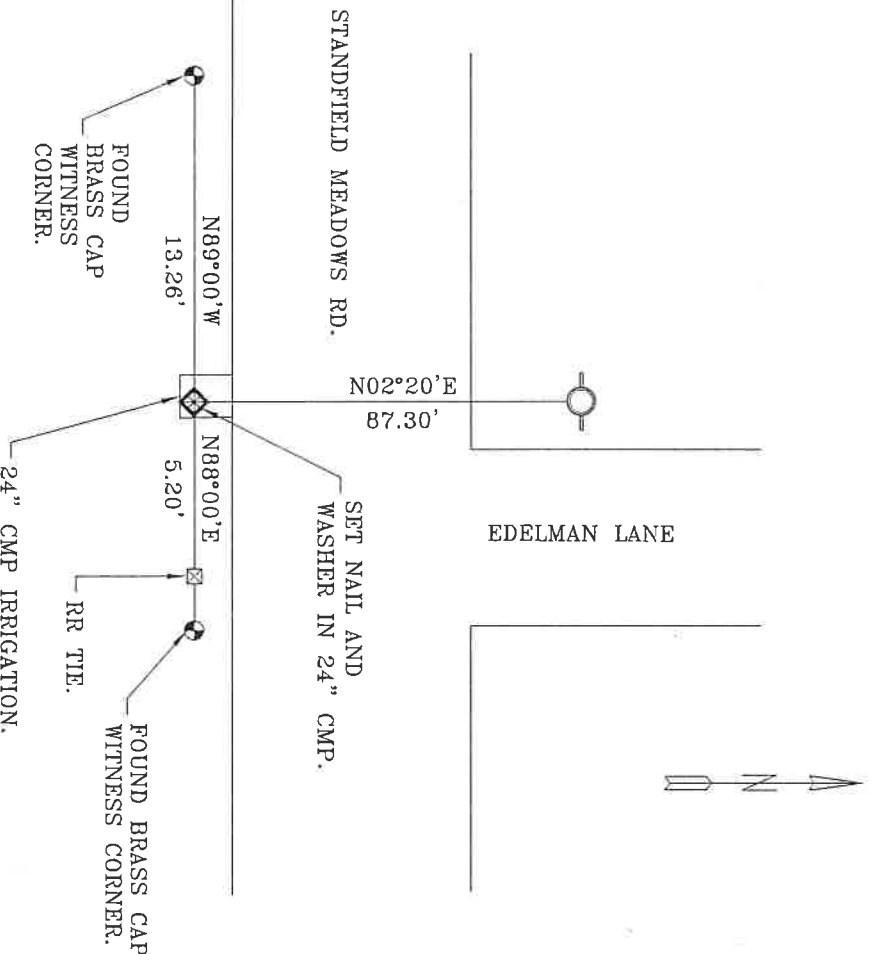
LOCATION PER SURVEY NO. S-156-C, THIS CORNER LOCATION WAS A PROPORTIONED LOCATION ON LINE BETWEEN THE

SECTION CORNERS. THE P.K. NAIL WAS PLACED AT THE PROPORTIONED LOCATION WITH UPDATED INFORMATION ON THE

CORNER FORM IN REGARDS TO THE TWO W.C. WHICH WERE SET DIFFERENT THAN NOTED.

SET 1 1/2" STEEL WASHER MARKED 61420, IN WEST SIDE OF POWER POLE W/MAG NAIL, N02°20'E, 87.30 FT.

Sketch of Monument, Accessories and General Area



**REGISTERED
PROFESSIONAL
LAND SURVEYOR**

Rance Clark King
OREGON
MAY 10, 2011
RANCE CLARK KING
61420

RENEWS: 6/30/2021

Agency:

CK3, LLC
945 W. ORCHARD
HERMISTON OREGON 97838
OFFICE: 541-567-2345
FAX: 541-567-2305
WEB: CK3LLC.NET
Field Book # 0-325

**COUNTY SURVEYOR
RECORDING INFO**

Received _____
Filed _____
Survey No. _____
Drawing No. _____
Index No. Z-23

19-080-C