

OREGON CORNER RESTORATION FORM

SECTION 1,6,36 TOWNSHIP 4,5 NORTH RANGE 28,29 EAST A-1
 COUNTY : UMATILLA DATE MAY/20

CORNER DESIGNATION

SECTION CORNER

- CONDITION REPORT ONLY
- NOT FOUND
- RENEWED
- UNCOVERED
- SURVEYED IN
- REFERENCED

PREVIOUS RENEWALS / SURVEYS, ETC.

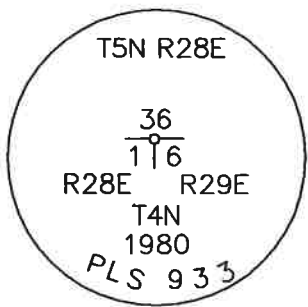
ORIGINALLY SURVEYED IN 1860 BY CAMPBELL UNDER CONTRACT #95. HE SET A POST IN A MOUND.
 IN 1972 STABLER FOUND A 1" IRON PIPE.
 IN 1980 KRUMBEIN FOUND A 3/4" IRON PIPE WITH WOOD STAKE AND SET A 2 1/2" BC STAMPED AS BELOW.

MONUMENTS AND ACCESSORIES FOUND: CONDITION AND SOURCE

AN ALUMINUM BEARING TREE TAG ON A POWER POLE LIES S 29°42'46" E, 60.76 FEET.
 AN ALUMINUM TAG #951 ON A POWER POLE LIES N 29°17'46" W, 40.65 FEET.
 A 2 3/8" BC STAMPED AS BELOW LIES N 00°24'24" E, 32.93 FEET.
 A 1" x 1" ALUMINUM TAG MKD "PLS LS 48509" ON A RXR TIE FENCE POST LIES S 47°19'04" W, 61.33 FEET.
 A 2 3/8" BC STAMPED AS BELOW.

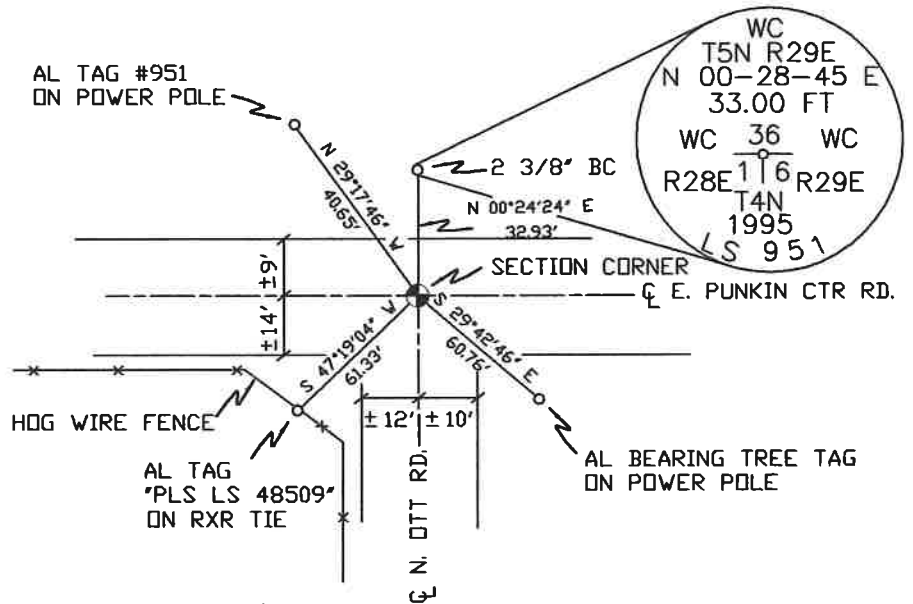
MONUMENT DETAIL

SKETCH



NAD 83/91
 OREGON STATE PLANE
 INTERNATIONAL FEET

803754.51
 8520950.48



MONUMENT SET (PROCEDURES AND DESCRIPTION)

NEW ACCESSORIES FROM WHICH

LOCATION AND COMMENTS

AT INTERSECTION OF PUNKIN
 CENTER RD. AND OTT RD. SOUTH.

COMPASS DEC.

FIRM/AGENCY
 PRIMM LAND SURVEYING
 P.O. BOX 1322
 HERMISTON, OREGON 97838

PARTY CHIEF
 KEITH P. PRIMM

NOTES

WITNESS
 KEITH P. PRIMM

SURVEYOR'S SEAL

REGISTERED
 PROFESSIONAL
 LAND SURVEYOR

Keith P. Primm
 OREGON
 JULY 12, 2005
 KEITH P. PRIMM
 48490

EXPIRATION DATE: 12/31/20

FMA 21-004-C

01 DEC 20