

OREGON CORNER RESTORATION FORM

SECTION 4,33 TOWNSHIP 4,5 NORTH RANGE 29 EAST
 COUNTY : UMATILLA DATE MAY/20

A-11

CORNER DESIGNATION

1/4 CORNER

CONDITION REPORT ONLY
 NOT FOUND
 RENEWED
 UNCOVERED
 SURVEYED IN
 REFERENCED

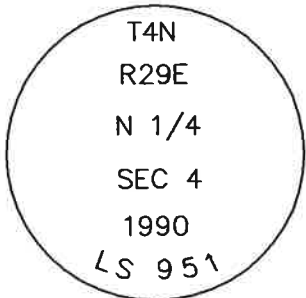
PREVIOUS RENEWALS / SURVEYS, ETC.

KIMBRELL SURVEY #308 IN 1910, HE DID NOT SAY IF HE SET ANYTHING.
 IN 1990 EDWARDS SET A 1" X 30" IRON PIPE WITH A 2 3/8" BC FLUSH WITH SURFACE OF PAVED ROAD STAMPED AS BELOW BY SINGLE PROPORTION.

MONUMENTS AND ACCESSORIES FOUND: CONDITION AND SOURCE

AN ALUMINUM TAG #951 ON A RXR TIE FENCE POST LIES N 49°54'37" W, 30.90 FEET.
 AN ALUMINUM TAG #951 ON A 20" LOCUST TREE LIES S 10°56'48" W, 46.04 FEET.
 AN ALUMINUM TAG #951 ON A RXR TIE FENCE POST LIES S 18°40'17" E, 23.57 FEET.
 A 2 3/8" BC STAMPED AS BELOW.

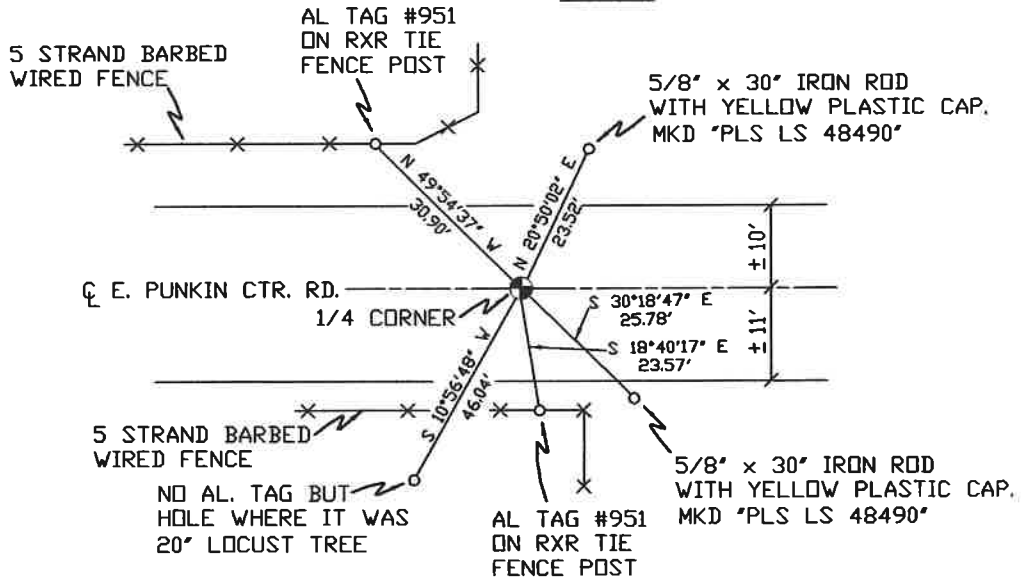
MONUMENT DETAIL



NAD 83/91
 OREGON STATE PLANE
 INTERNATIONAL FEET
 803921.72
 8534657.04



SKETCH



MONUMENT SET (PROCEDURES AND DESCRIPTION)

NEW ACCESSORIES FROM WHICH

A 5/8" x 30" IRON ROD WITH A YELLOW PLASTIC CAP MKD "PLS LS 48490" LIES S 32°18'47" E, 25.78 FEET.
 A 5/8" x 30" IRON ROD WITH A YELLOW PLASTIC CAP MKD "PLS LS 48490" LIES N 20°50'02" E, 23.52 FEET.

LOCATION AND COMMENTS

FROM INTERSECTION OF EDWARDS RD. AND PUNKIN CTR. RD. GO EAST ON PUNKIN CTR. RD. 1/2 MILE TO CORNER.

COMPASS DEC.

FIRM/AGENCY
 PRIMM LAND SURVEYING
 P.O. BOX 1322
 HERMISTON, OREGON 97838

PARTY CHIEF
 PAUL P. PILCH

NOTES

WITNESS
 KEITH P. PRIMM

SURVEYOR'S SEAL

REGISTERED
 PROFESSIONAL
 LAND SURVEYOR

Keith P. Primm
 OREGON
 JULY 12, 2005
 KEITH P. PRIMM
 48490

EXPIRATION DATE: 12/31/20

FMA

21-004-C

01 DEC 20