

OREGON CORNER RESTORATION FORM

SECTION 5,6,31 TOWNSHIP 4 NORTH RANGE 29 EAST

A5

COUNTY : UMATILLA

DATE MAY/20

CORNER DESIGNATION

CONDITION REPORT ONLY

NOT FOUND

RENEWED

UNCOVERED

SURVEYED IN

REFERENCED

SECTION CORNER

PREVIOUS RENEWALS / SURVEYS, ETC.

ORIGINALLY SURVEYED IN 1861 BY DAVENPORT UNDER CONTRACT #101. HE SET A POST IN A MOUND OF EARTH AND A CHARRED STAKE.

IN 1910 KIMBRELL SET A 1 1/2" IRON PIPE

IN 1992-1 COUNTY MONUMENTATION SURVEY LS 951 FOUND A 5/8" REBAR, CRAMER, 1983, SET OVER KIMBRELL'S 1910 1 1/2" IRON PIPE.

MONUMENTS AND ACCESSORIES FOUND: CONDITION AND SOURCE

AN ALUMINUM TAG #951 ON A POWER POLE LIES S 82°18'22" E, 239.10 FEET.

A SCRIBED X IN THE CORNER OF A SIDEWALK LIES S 30°21'44" E, 90.49 FEET.

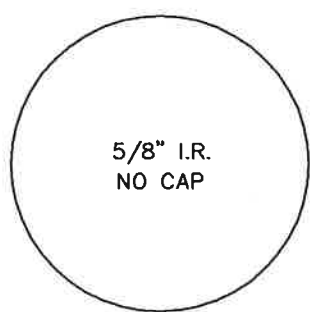
AN ALUMINUM TAG #951 ON A POWER POLE LIES S 45°16'48" W, 49.24 FEET.

A 2 3/8" BC WITNESS CORNER LIES N 00°15'59" E, 11.83 FEET.

A 5/8" IRON ROD AS SHOWN BELOW WITH NO CAP.

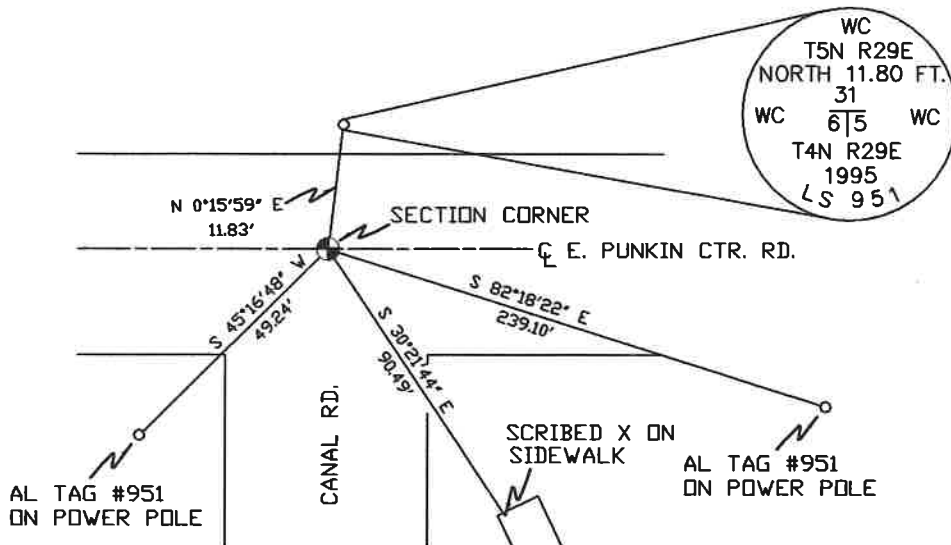
MONUMENT DETAIL

SKETCH



NAD 83/91
OREGON STATE PLANE
INTERNATIONAL FEET

803818.13
8526747.00



MONUMENT SET (PROCEDURES AND DESCRIPTION)

NEW ACCESSORIES FROM WHICH

LOCATION AND COMMENTS

AT THE INTERSECTION OF
PUNKIN CENTER RD. AND
CANAL RD.

COMPASS DEC.

FIRM/AGENCY

PRIMM LAND SURVEYING
P.O. BOX 1322
HERMISTON, OREGON 97838

PARTY CHIEF

KEITH P. PRIMM

NOTES

WITNESS

KEITH P. PRIMM

SURVEYOR'S SEAL

REGISTERED
PROFESSIONAL
LAND SURVEYOR

Keith P. Primm
OREGON
JULY 12, 2005
KEITH P. PRIMM
48490

EXPIRATION DATE: 12/31/20

21-004-C

Φ DEC 20

7/11/20