

OREGON CORNER RESTORATION FORM

SECTION 1,6 TOWNSHIP 4 NORTH RANGE 28,29 EAST
 COUNTY : UMATILLA DATE MAY/20

C-1

CORNER DESIGNATION

1/4 CORNER

- CONDITION REPORT ONLY
- NOT FOUND
- RENEWED
- UNCOVERED
- SURVEYED IN
- REFERENCED

PREVIOUS RENEWALS / SURVEYS, ETC.

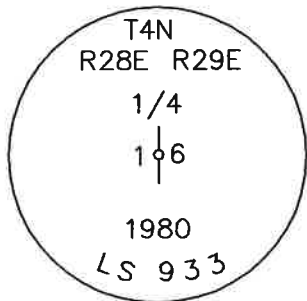
ORIGINALLY SURVEYED IN 1860 BY CAMPBELL UNDER CONTRACT #95. HE SET A POST IN A MOUND.
 IN 1949 OFNER SET A 3/4" IP.
 IN 1980 KRUMBEIN SET A 2 3/8" BC OVER 3/4" IP, S-156-C.

MONUMENTS AND ACCESSORIES FOUND: CONDITION AND SOURCE

AN ALUMINUM TAG #951 ON A POWER POLE LIES N 22°42'33" W, 65.27 FEET.
 AN ALUMINUM TAG #951 ON A POWER POLE LIES S 58°37'27" W, 41.03 FEET.
 A 2 3/8" BC STAMPED AS BELOW LIES N 89°37'27" E, 33.12 FEET.
 A 2 1/4" OD IRON PIPE FENCE CORNER MARKED WITH A SCRIBE ON TOP OF CAP LIES S 9°54'53" E, 160.76 FEET.
 A 2 3/8" BC STAMPED AS BELOW.

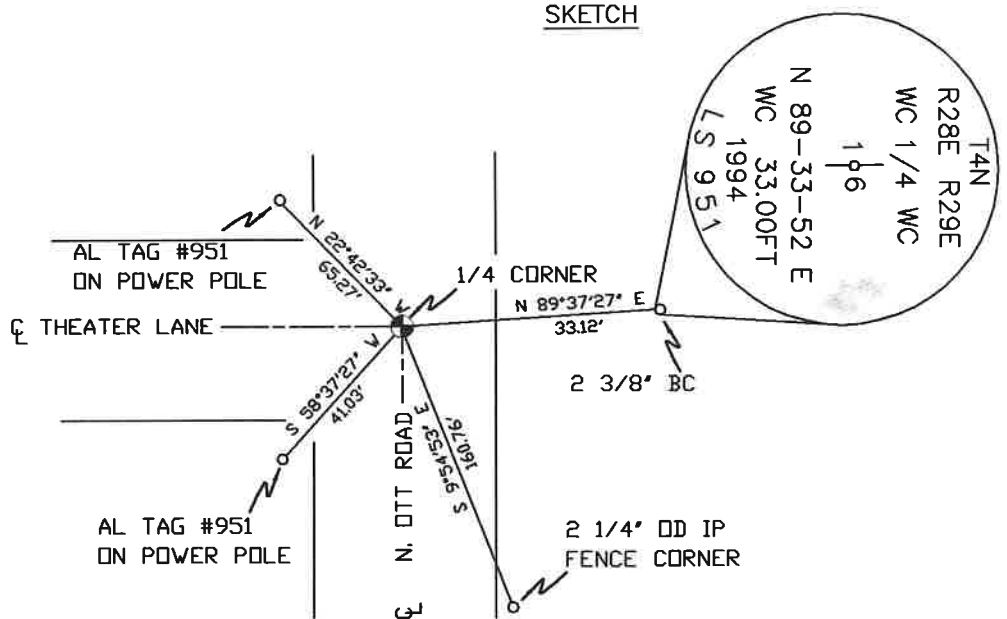
MONUMENT DETAIL

SKETCH



NAD 83/91
 OREGON STATE PLANE
 INTERNATIONAL FEET

800865.27
 8520971.29



MONUMENT SET (PROCEDURES AND DESCRIPTION)

NEW ACCESSORIES FROM WHICH

LOCATION AND COMMENTS

AT THE INTERSECTION OF OTT RD. AND THEATER LANE.

COMPASS DEC.

FIRM/AGENCY
 PRIMM LAND SURVEYING
 P.O. BOX 1322
 HERMISTON, OREGON 97838

PARTY CHIEF
 BRIT L. PRIMM

NOTES

WITNESS
 KEITH P. PRIMM

SURVEYOR'S SEAL

REGISTERED
 PROFESSIONAL
 LAND SURVEYOR

Keith P. Primm
 OREGON
 JULY 12, 2005
 KEITH P. PRIMM
 48490

EXPIRATION DATE: 12/31/20

FMA 21-004-C

01 DEC 20