

OREGON CORNER RESTORATION FORM

SECTION 4 TOWNSHIP 4 NORTH RANGE 29 EAST C-13
 COUNTY : UMATILLA DATE 01-2002

CORNER DESIGNATION

E 1/4

- CONDITION REPORT ONLY
- NOT FOUND
- RENEWED
- UNCOVERED
- SURVEYED IN
- REFERENCED

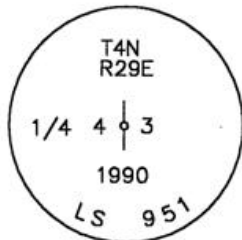
PREVIOUS RENEWALS / SURVEYS, ETC.

ORIGINALLY SURVEYED BY DAVENPORT IN 1861, #101. HE SET A POST.
 UNRECORDED SURVEY IN 1924 BY U.S. BIOLOGICAL SURVEY.
 IN 1990 I SET A 1"x30" IRON PIPE WITH A 2 3/8" BRASS CAP

MONUMENTS AND ACCESSORIES FOUND: CONDITION AND SOURCE

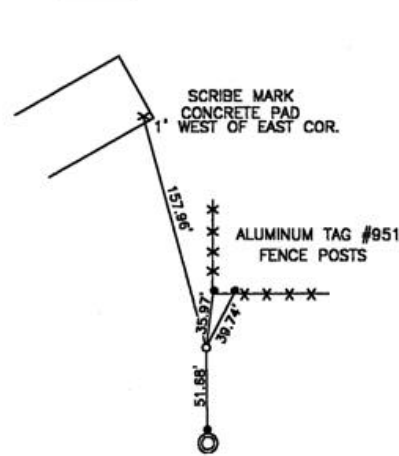
FOUND A 2 3/8" BRASS CAP DISTURBED FROM ORIGINAL LOCATION STAMPED AS BELOW.
 FOUND AN ALUMINUM TAG #951 ON A FENCE POST BEARS N 7°37'34" W 35.97 FEET
 FOUND AN ALUMINUM TAG #951 ON A FENCE POST BEARS N 27°37'48" E 39.74 FEET
 FOUND AN ALUMINUM TAG #951 ON A POWER POLE BEARS S 0°56'02" E 51.68 FEET

MONUMENT DETAIL



NAD 83/91
 OREGON STATE PLANE
 INTERNATIONAL FEET
 801287.1785
 8537313.1122

SKETCH



ALUMINUM TAG #951
 POWER POLE

MONUMENT SET (PROCEDURES AND DESCRIPTION)

RESET DISTURBED BRASS CAP ON 1" IRON PIPE FROM 3 EXISTING ACCESSORIES
 FLUSH WITH THE GROUND.

NEW ACCESSORIES FROM WHICH

A SCRIBE MARK ON A CONCRETE PAD BEARS N 15°27'33" W 157.96 FEET

LOCATION AND COMMENTS

FROM THE INTERSECTION OF
 LOOP ROAD AND EDWARDS ROAD, GO
 ALONG NORTH BANK OF LARGE CANAL
 1.4 MILES. CORNER LIES 0.15 MILES
 NORTHERLY OF THE CANAL AT
 GAME REFUGE FENCE CORNER.

COMPASS DEC.

FIRM/AGENCY
 EDWARDS SURVEYING
 P.O. BOX 763
 HERMISTON, OREGON 97838

PARTY CHIEF
 CURTIS FAVOREL

NOTES

WITNESS
 WALT MUNDELL

SURVEYOR'S SEAL

REGISTERED
 PROFESSIONAL
 LAND SURVEYOR

G. Dennis Edwards

OREGON
 JULY 16, 1971
 G. DENNIS EDWARDS
 9 5 1
 RENEWS 12/31/2003

03-53-9