

OREGON CORNER RESTORATION FORM

SECTION 4 TOWNSHIP 4N RANGE 29E C-13

COUNTY: UMATILLA DATE 9/90

CORNER DESIGNATION

East 1/4 Corner

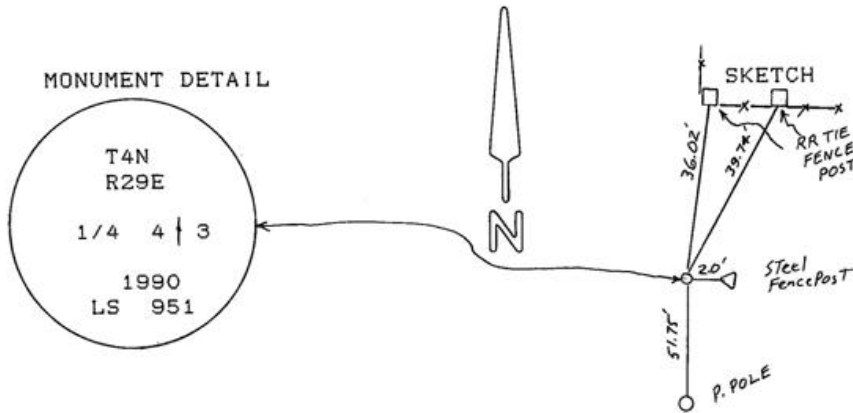
CONDITION REPORT ONLY
NOT FOUND
RENEWED
UNRECORDED
x SURVEYED IN
x REFERENCED OUT

PREVIOUS RENEWALS/SURVEYS, ETC.

Original survey by Davenport in 1861 under Contract #101. He set post. Unrecorded survey in 1924 by U.S. Biological Survey.

MONUMENTS & ACCESSORIES FOUND: Condition and Source

Nothing found. Fence corner lies 36 feet North, at location of a Brass Cap that Palmer found in 1976, Survey Co. #M-43.



MONUMENT SET (PROCEDURES AND DESCRIPTION)

By single proportion, set 1"x30" Iron pipe with 2 3/8" Brass Cap, stamped as above, 6" above surface with mound of stone. SEE CO. SUR. #

NEW ACCESSORIES

From which Alum. tag #951 in RR tie fence post Bears. N27° 04' 10"E 39.74 feet, Alum. tag #951 in RR tie fence post Bears. N7° 01' 20"E 36.02 feet, Alum. tag #951 in power pole Bears. S0° 43' 20"E 51.75 feet, Steel fence post Bears. East 2.0 feet.

Attached Witness sign to steel fence post and B.O. signs to all.

LOCATION & COMMENTS

From intersection of Loop Rd. and Edwards Rd., go along North bank of large canal 1.4 miles. Corner lies 0.15 mile Northerly of canal at Game Refuge fence corner

COMPASS DEC. FIRM EDWARDS SURVEYING P.O. BOX 763, HERMISTON, OREGON, 97838 PARTY CHIEF D. EDWARDS NOTES

SURVEYOR'S SEAL

REGISTERED PROFESSIONAL LAND SURVEYOR

G. Dennis Edwards

OREGON JULY 16, 1974 G. DENNIS EDWARDS 951

RECEIVED BY WESS J. COPPOCK

Umatilla County Surveyor

Date 11-90

Rec'd By KA

No. 90-077-B