

OREGON CORNER RESTORATION FORM

SECTION 1,6 TOWNSHIP 4 NORTH RANGE 29,30 EAST
 COUNTY : UMATILLA DATE MAY/20

C-25

CORNER DESIGNATION

1/4 CORNER

- CONDITION REPORT ONLY
- NOT FOUND
- RENEWED
- UNCOVERED
- SURVEYED IN
- REFERENCED

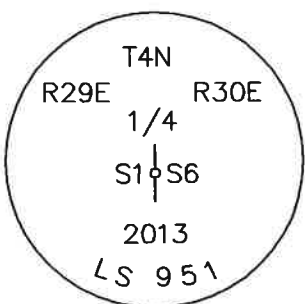
PREVIOUS RENEWALS / SURVEYS, ETC.

ORIGINALLY SURVEYED IN 1860 BY CAMPBELL UNDER CONTRACT #95. HE SET A CHARRED STAKE WITH RAISED MOUND OF EARTH AND PITS. EDWARDS SET A 2 3/8" BC IN 2013.

MONUMENTS AND ACCESSORIES FOUND: CONDITION AND SOURCE

- A 5/8" IRON ROD WITH A PLASTIC CAP "#951" LIES S 35°11'55" W, 29.40 FEET.
- A 5/8" IRON ROD WITH A PLASTIC CAP "#951" LIES S 9°11'32" E, 30.34 FEET.
- A 5/8" IRON ROD WITH A PLASTIC CAP "#951" LIES N 78°36'10" E, 57.68 FEET.
- A 5/8" IRON ROD WITH A PLASTIC CAP "#951" LIES N 15°17'10" E, 11.13 FEET.
- A 2 3/8" BC STAMPED AS BELOW.

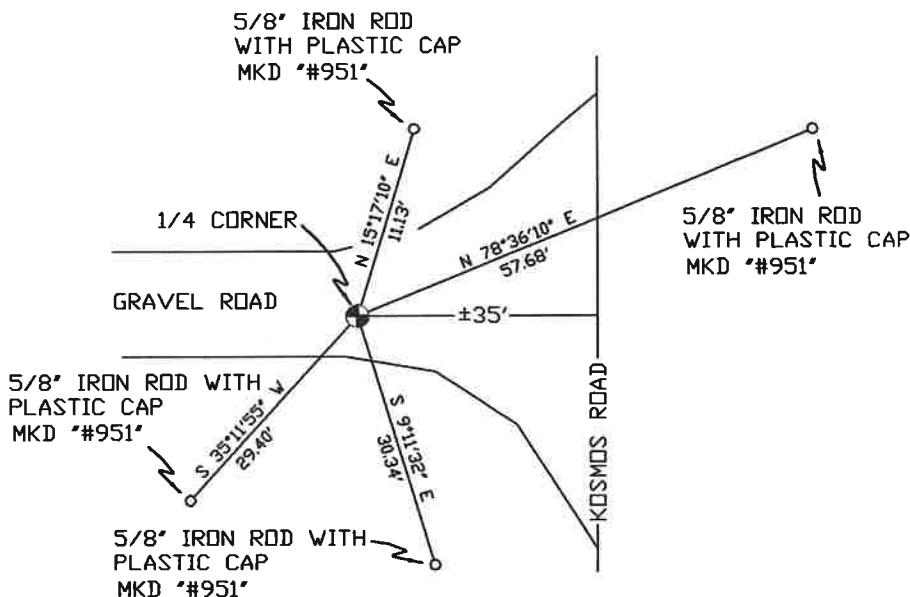
MONUMENT DETAIL



NAD 83/91
 OREGON STATE PLANE
 INTERNATIONAL FEET

801551.70
 8553174.58

SKETCH



MONUMENT SET (PROCEDURES AND DESCRIPTION)

NEW ACCESSORIES FROM WHICH

LOCATION AND COMMENTS

FROM INTERSECTION OF KOSMOS RD. AND LOOP RD. GO EAST ON KOSMOS RD. 1.5 MILES TO ANGLE IN SAID ROAD GO NORTH 1.5 MILES, CORNER IS 30' WEST OF CENTERLINE OF KOSMOS RD.

COMPASS DEC.

FIRM/AGENCY

PRIMM LAND SURVEYING
 P.O. BOX 1322
 HERMISTON, OREGON 97838

PARTY CHIEF

PAUL P. PILCH

NOTES

WITNESS

KEITH P. PRIMM

SURVEYOR'S SEAL

REGISTERED
 PROFESSIONAL
 LAND SURVEYOR

Keith P. Primm
 OREGON
 JULY 12, 2005
 KEITH P. PRIMM
 48490

EXPIRATION DATE: 12/31/20

JPA 21-004-C

01 DEC 20