

# OREGON CORNER RESTORATION FORM

SECTION 6,5 TOWNSHIP 4 NORTH RANGE 29 EAST C-5  
 COUNTY : UMATILLA DATE 02/02

CORNER DESIGNATION

1/4 CORNER

- CONDITION REPORT ONLY
- NOT FOUND
- RENEWED
- UNCOVERED
- SURVEYED IN
- REFERENCED

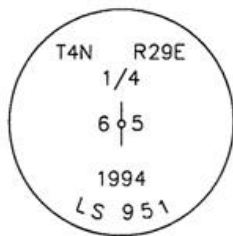
PREVIOUS RENEWALS / SURVEYS, ETC.

ORIGINALLY SURVEYED IN 1861 BY DAVENPORT UNDER CONTRACT #101. HE SET A POST IN A MOUND OF EARTH AND A CHARRED STAKE.  
 IN 1979 EDWARDS SET A R x R SPIKE, (TAYLOR SURVEY).  
 IN 1985 EDWARDS SET A R x R SPIKE, (ATKINS SURVEY).  
 IN 1994 EDWARDS SET A 1" x 30" IRON PIPE WITH A 2 3/8" BC STAMPED AS BELOW IN PLACE OF 1985 R x R SPIKE, (ATKINS SURVEY).

MONUMENTS AND ACCESSORIES FOUND: CONDITION AND SOURCE

AN ALUMINUM TAG #951 ON A POWER POLE LIES S 59°56'24" E, 37.89 FEET.  
 AN ALUMINUM TAG #951 ON A R x R TIE LIES S 43°26'31" W, 29.22 FEET.  
 A 2 1/4" OD IRON PIPE FENCE CORNER MARKED WITH A SCRIBE ON TOP OF CAP LIES N 61°04'39" W, 35.77 FEET.

MONUMENT DETAIL

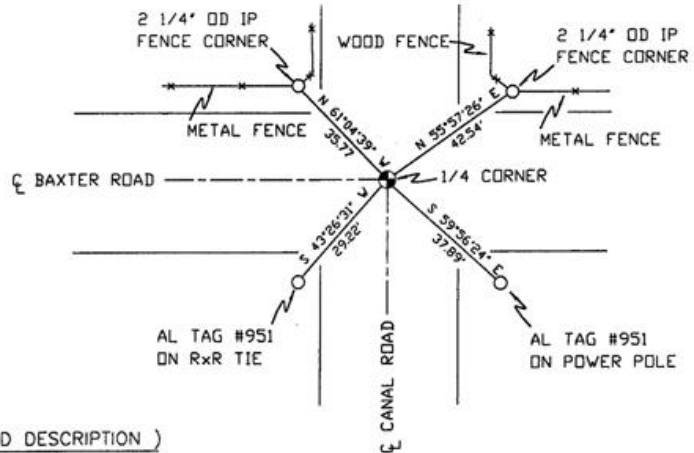


NAD 83/91  
 OREGON STATE PLANE  
 INTERNATIONAL FEET

800999.6345  
 8526774.6890



SKETCH



MONUMENT SET ( PROCEDURES AND DESCRIPTION )

NEW ACCESSORIES FROM WHICH

A 2 1/4" OD IRON PIPE FENCE CORNER MARKED WITH A SCRIBE ON TOP OF CAP LIES N 55°57'26" E, 42.54 FEET.

LOCATION AND COMMENTS

AT INTERSECTION OF BAXTER ROAD AND CANAL ROAD.

COMPASS DEC.

FIRM/AGENCY  
 PRIMM LAND SURVEYING  
 P.O. BOX 1322  
 HERMISTON, OREGON 97838

PARTY CHIEF  
 KEITH P. PRIMM

NOTES

WITNESS  
 BRIT L. PRIMM

SURVEYOR'S SEAL

REGISTERED  
 PROFESSIONAL  
 LAND SURVEYOR

*Brit L. Primm*

OREGON  
 JULY 13, 1999  
 BRIT L. PRIMM  
 48509

EXPIRATION DATE:12/31/02

03-52-9