

OREGON CORNER RESTORATION FORM

SECTION 4 TOWNSHIP 4 NORTH RANGE 29 EAST C-9
 COUNTY : UMATILLA DATE 01-2002

CORNER DESIGNATION

WEST 1/4 CORNER

- CONDITION REPORT ONLY
- NOT FOUND
- RENEWED
- UNCOVERED
- SURVEYED IN
- REFERENCED

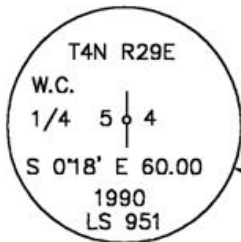
PREVIOUS RENEWALS / SURVEYS, ETC.

ORIGINALLY SURVEYED IN 1861 BY DAVENPORT UNDER CONTRACT #101. HE SET POST.
 KIMBRELL SET AN IRON PIPE IN 1910, COUNTY SURVEY #308.
 CORNER FALLS ON THE SIDE OF CONCRETE CANAL. NOT SET. LOCATION OF CORNER COMPUTED BY
 SINGLE PROPORTION IN SURVEY FOR HELLBURG.

MONUMENTS AND ACCESSORIES FOUND: CONDITION AND SOURCE

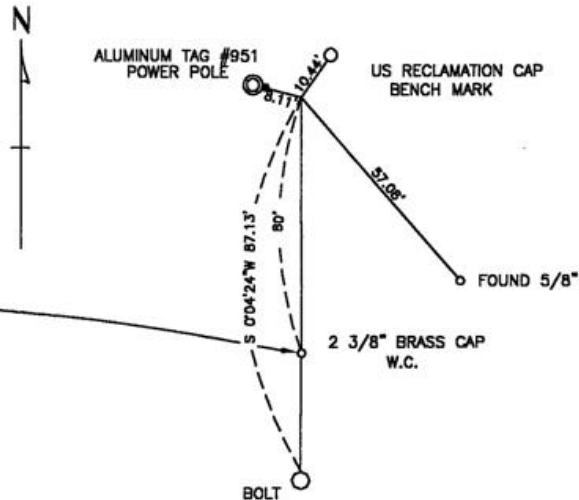
CORNER NOT SET IN SIDE SLOPE OF CONCRETE CANAL.
 A 3/4"x24" BOLT BEARS S 0°04'24" W 87.13 FEET
 AN ALUMINUM TAG #951 ON A POWER POLE BEARS N 76°26'44" W 8.11 FEET
 A BRASS CAPP WITNESS CORNER BEARS S 0°06'33" E 60.00 FEET

MONUMENT DETAIL



NAD 83/91
 OREGON STATE PLANE
 INTERNATIONAL FEET
 801129.2867
 8532078.5891

SKETCH



MONUMENT SET (PROCEDURES AND DESCRIPTION)

NA

NEW ACCESSORIES FROM WHICH

A 5/8" IRON ROD BEARS S 40°56'25" E 57.08 FEET
 A US RECLAMATION BENCH MARK, ALUMINUM CAP BEARS N 35°10'45" E 10.44 FEET

LOCATION AND COMMENTS
 AT THE INTERSECTION OF
 EDWARDS ROAD AND BAXTER
 ROAD.

COMPASS DEC.

FIRM/AGENCY
 EDWARDS SURVEYING
 P.O. BOX 763
 HERMISTON, OREGON 97838

PARTY CHIEF
 CURTIS FAVOREL
NOTES

WITNESS
 WALT MUNDELL

SURVEYOR'S SEAL

REGISTERED
 PROFESSIONAL
 LAND SURVEYOR

G. Dennis Edwards

OREGON
 JULY 16, 1971
 G. DENNIS EDWARDS
 9 5 1
 RENEWS 12/31/2003

03-53-9