

OREGON CORNER RESTORATION FORM

SECTION 4 TOWNSHIP 4 NORTH RANGE 29 EAST E-11
 COUNTY : UMATILLA DATE 01-2002

CORNER DESIGNATION

S 1/4

- CONDITION REPORT ONLY
- NOT FOUND
- RENEWED
- UNCOVERED
- SURVEYED IN
- REFERENCED

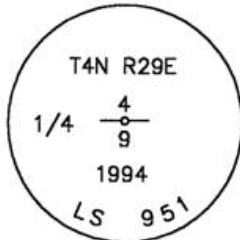
PREVIOUS RENEWALS / SURVEYS, ETC.

ORIGINALLY SURVEYED BY DAVENPORT IN 1861, #101. HE SET A POST IN A MOUND WITH A CHARRED STAKE
 1910 KIMBRELL SET A 1 1/2" IRON PIPE (SURVEY BOOK 2 PAGE 162).
 IN 1992 I SET A 1"X30" IRON PIPE WITH A 2 3/8" BRASS CAP, STAMPED AS BELOW, OVER A
 1 1/2" IRON PIPE. SEE MY 1992-1 COUNTY MONUMENTATION SURVEY

MONUMENTS AND ACCESSORIES FOUND: CONDITION AND SOURCE

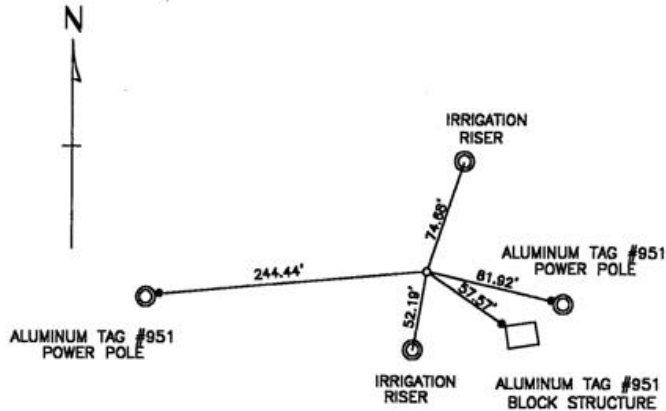
FOUND 1"X30" IRON PIPE WITH BRASS CAP STAMPED AS BELOW (DISTURBED).
 FOUND A 1 1/2" IRON PIPE 40" BELOW THE SURFACE FROM WHICH:
 AN ALUMINUM TAG #951 ON THE NW CORNER OF A BLOCK STRUCTURE BEARS S 55°36'48" E 57.57 FEET
 AN ALUMINUM TAG #951 ON A POWER POLE BEARS S 84°57'38" W 244.44 FEET
 AN ALUMINUM TAG #951 ON A POWER POLE BEARS S 77°01'53" E 81.92 FEET

MONUMENT DETAIL



NAD 83/91
 OREGON STATE PLANE
 INTERNATIONAL FEET
 798554.2616
 8534725.3194

SKETCH



MONUMENT SET (PROCEDURES AND DESCRIPTION)

RESET MY 1994 BRASS CAP ON 1"X30" IRON PIPE 10" BELOW THE SURFACE
 OF A CULTIVATED FIELD OVER FOUND 1 1/2" IRON PIPE

NEW ACCESSORIES FROM WHICH

AN IRRIGATION RISER BEARS S 9°54'25" W 52.19 FEET
 AN IRRIGATION RISER BEARS N 18°52'30" E 74.68 FEET

LOCATION AND COMMENTS

FROM THE INTERSECTION OF
 PUNKIN CENTER ROAD AND
 EDWARDS ROAD, GO SOUTH
 ON EDWARDS 1 MILE TO
 GRAVEL ROAD, GO EAST ON
 GRAVEL ROAD 1/2 MILE TO
 CORNER.

COMPASS DEC.

FIRM/AGENCY
 EDWARDS SURVEYING
 P.O. BOX 763
 HERMISTON, OREGON 97838

PARTY CHIEF
 CURTIS FAVOREL

NOTES

WITNESS
 WALT MUNDELL

SURVEYOR'S SEAL

REGISTERED
 PROFESSIONAL
 LAND SURVEYOR

G. Dennis Edwards

OREGON
 JULY 16, 1971
 G. DENNIS EDWARDS
 9 5 1
 RENEWS 12/31/2003

03-53-9