

OREGON CORNER RESTORATION FORM

SECTION 1,6,7,12 TOWNSHIP 4 NORTH RANGE 29,30 EAST E-25
 COUNTY : UMATILLA DATE MAY/20

CORNER DESIGNATION

SECTION CORNER

- CONDITION REPORT ONLY
- NOT FOUND
- RENEWED
- UNCOVERED
- SURVEYED IN
- REFERENCED

PREVIOUS RENEWALS / SURVEYS, ETC.

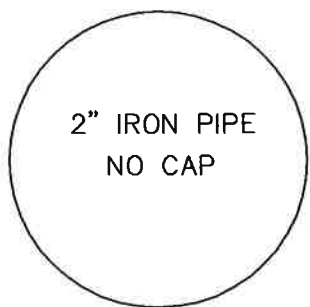
ORIGINALLY SURVEYED IN 1860 BY CAMPBELL UNDER CONTRACT #95. HE SET A CHARRED STAKE WITH RAISED MOUND OF EARTH AND PITS.

MONUMENTS AND ACCESSORIES FOUND: CONDITION AND SOURCE

- A 5/8" IRON ROD WITH A PLASTIC CAP "#951" LIES N 89°18'13" W, 15.36 FEET.
- A 5/8" IRON ROD WITH A PLASTIC CAP "#951" LIES N 22°55'05" W, 22.05 FEET.
- A 5/8" IRON ROD WITH A PLASTIC CAP "#951" LIES N 60°13'49" E, 116.27 FEET.
- A 5/8" IRON ROD WITH A PLASTIC CAP "#951" LIES S 2°38'07" E, 89.29 FEET.
- A 2" IRON PIPE, ORIGIN UNKNOWN.

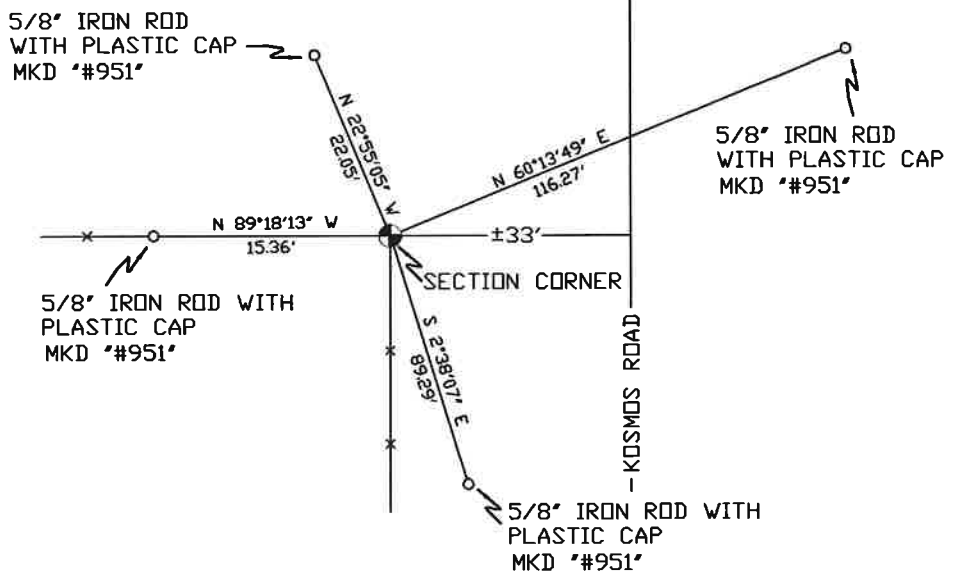
MONUMENT DETAIL

SKETCH



NAD 83/91
 OREGON STATE PLANE
 INTERNATIONAL FEET

798920.57
 8553213.38



MONUMENT SET (PROCEDURES AND DESCRIPTION)

NEW ACCESSORIES FROM WHICH

LOCATION AND COMMENTS

FROM INTERSECTION OF LOOP RD.
 AND KOSMOS RD., GO EAST ON
 KOSMOS RD. 1.5 MILES THEN GO
 NORTH ON KOSMOS RD. 1 MILE
 CORNER IS 33' WEST OF CENTERLINE.

COMPASS DEC.

FIRM/AGENCY

PRIMM LAND SURVEYING
 P.O. BOX 1322
 HERMISTON, OREGON 97838

PARTY CHIEF

PAUL P. PILCH

NOTES

WITNESS

KEITH P. PRIMM

SURVEYOR'S SEAL

REGISTERED
 PROFESSIONAL
 LAND SURVEYOR

Keith P. Primm
 OREGON
 JULY 12, 2005
 KEITH P. PRIMM
 48490

EXPIRATION DATE: 12/31/20

ZMA 21-004-C

01 DEC 20