

OREGON CORNER RESTORATION FORM

SECTION 5,6,7,8 TOWNSHIP 4 NORTH RANGE 29 EAST E-5

COUNTY : UMATILLA DATE 02/02

CORNER DESIGNATION

- CONDITION REPORT ONLY
- NOT FOUND
- RENEWED
- UNCOVERED
- SURVEYED IN
- REFERENCED

SECTION CORNER

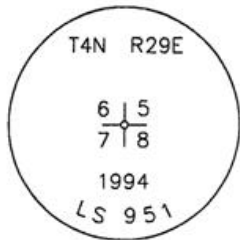
PREVIOUS RENEWALS / SURVEYS, ETC.

ORIGINALLY SURVEYED IN 1861 BY DAVENPORT UNDER CONTRACT #101. HE SET A POST IN A MOUND OF EARTH AND A CHARRED STAKE.
 IN ±1979 KRUMBEIN? SET A BC.
 IN 1910 KIMBRELL SET AN IRON PIPE, BK2 PG 152.
 IN 1987 CRAMER SET A 1" X 30" IRON PIPE IN CENTER KIMBRELLS.
 IN 1994 EDWARDS SET A 1' X 30" IRON PIPE WITH 2 3/8" BC STAMPED AS BELOW IN PLACE OF CRAMER & KIMBRELL IRON PIPES, HE BURRIED 1" IRON BAR, 1" IRON PIPE AND 1 1/2" IRON PIPE ALONG SIDE.

MONUMENTS AND ACCESSORIES FOUND: CONDITION AND SOURCE

AN ALUMINUM TAG #951 ON A POWER POLE LIES S 77°57'15" W, 17.51 FEET.
 AN ALUMINUM TAG #951 ON A POWER POLE LIES S 6°44'35" W, 149.59 FEET.
 AN ALUMINUM TAG #951 ON A POWER POLE LIES S 83°37'50" E, 36.99 FEET.
 AN ALUMINUM TAG #951 ON A RXR TIE FENCE POST LIES N 0°50'45" E, 53.33 FEET.
 A 2 1/2" BRASS CAP NO STAMP LIES S 80°09'35" W, 7.43 FEET.

MONUMENT DETAIL

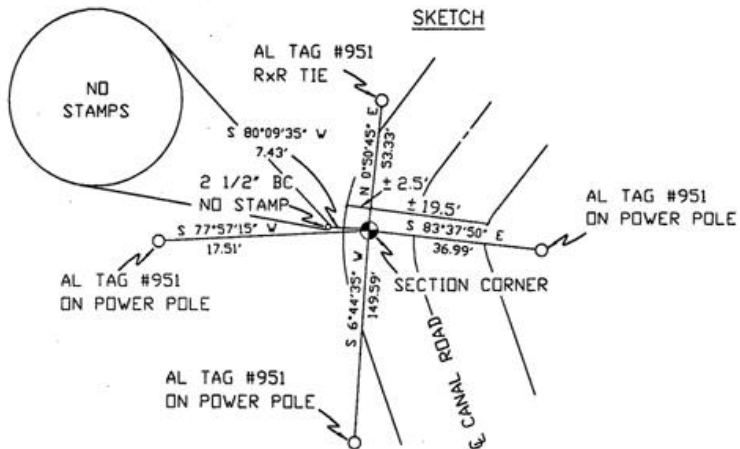


NAD 83/91
 OREGON STATE PLANE
 INTERNATIONAL FEET

798351.1647
 8526804.7707



SKETCH



MONUMENT SET (PROCEDURES AND DESCRIPTION)

NEW ACCESSORIES FROM WHICH

LOCATION AND COMMENTS

FROM INTERSECTION OF BAXTER RD.
 AND CANAL RD. GO SOUTH ON CANAL
 1/2 MILE TO CORNER.

COMPASS DEC.

FIRM/AGENCY
 PRIMM LAND SURVEYING
 P.O. BOX 1322
 HERMISTON, OREGON 97838

PARTY CHIEF
 KEITH P. PRIMM

NOTES

WITNESS
 BRIT L. PRIMM

SURVEYOR'S SEAL

REGISTERED
 PROFESSIONAL
 LAND SURVEYOR

Brit L. Primm

OREGON
 JULY 13, 1999
 BRIT L. PRIMM
 48509

EXPIRATION DATE: 12/31/02

03-52-9