

OREGON CORNER RESTORATION FORM

Section 5 Township 4 N Range 29 E

E-7

County UMATILLA Date 3/95

CORNER DESIGNATION

5/4 Cor

- Condition Report Only
- Not Found
- Renewed
- Unrecorded
- Surveyed In
- Referenced Out

Previous Renewals/Surveys, etc. ORIG SUR. DAVENPORT 1861 # 101
He set a post in mound with charred stake
Kimbrell set I Pipe 1910 Cramer set 1 1/4" I. Pipe 1986

Monument(s) & Accessories Found: (Condition and Source)

Nothing Fnd

Monument Detail

Sketch



Monument Set (Procedures and Description)

By retracing Cramer's 1986 sur. # 86-105-A I set
1" x 30" I. Pipe with 2 3/8" B.C. stamped as above 14"
below surface of cultivated field.

SEE MY 1992-1 COUNTY PUBLIC MONUMENTATION SUR.

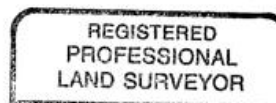
New Accessories

1" x 30" I. Pipe with 2 3/8" B.C. Bears S 82° 15' 21" W 14.34 FT
" " " " S 86° 04' E 20.79 FT
1/2" x 24" rebar with plastic cap " S 84° 43' 40" E 134.34 FT
5/8" Bolt x 29" with 1" nut " S 11° 05' W 9.49 FT

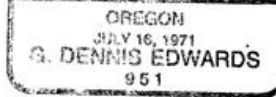
Location & Comments

From intersection Compass Declination _____
Punkin Center Rd Firm/Agency EDWARDS
with Edwards Rd SURVEYING
90 S. on Edwards Address P. Box 763
1 Mile. Then West HERMISTON, OR 97838
on Farm Rd. 1/2 mile Party Chief D. EDWARDS
to Cor. Notes _____
 Witness J. COPPOCK

Surveyor's Seal



G. Dennis Edwards



RENEWS 12/31/95

Umatilla County Surveyor

Date _____
 Rec'd By _____
 No. 25928