

OREGON CORNER RESTORATION FORM

SECTION 10,11 TOWNSHIP 4 NORTH RANGE 29 EAST

G-17

COUNTY : UMATILLA DATE MAY/20

CORNER DESIGNATION

CONDITION REPORT ONLY

1/4 CORNER

NOT FOUND
 RENEWED
 UNCOVERED
 SURVEYED IN
 REFERENCED

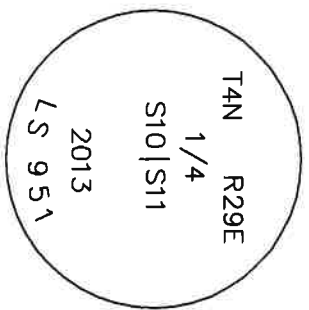
PREVIOUS RENEWALS / SURVEYS, ETC.

ORIGINALLY SURVEYED IN 1861 BY DAVENPORT UNDER CONTRACT #101. HE SET A POST IN A MOUND OF EARTH AND A CHARRED STAKE. EDWARDS SET A 2 3/8" BC IN 2013.

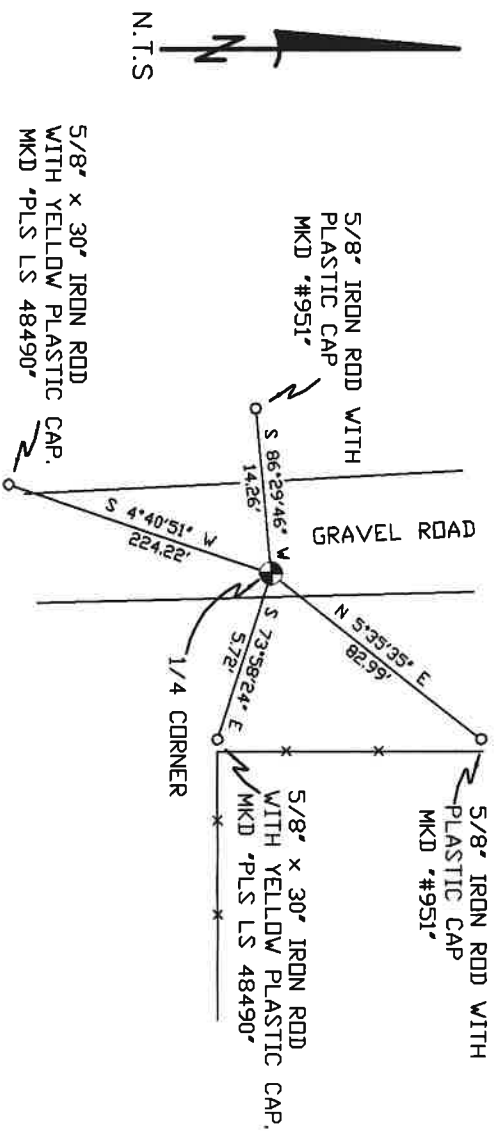
MONUMENTS AND ACCESSORIES FOUND: CONDITION AND SOURCE

- A 5/8" IRON ROD WITH A PLASTIC CAP "#951" LIES S 86°29'46" W, 14.26 FEET.
- A 5/8" IRON ROD WITH A PLASTIC CAP "#951" LIES N 5°35'35" E, 82.99 FEET.
- A 2 3/8" BC STAMPED AS BELOW.

MONUMENT DETAIL



SKETCH



NAD 83/91
 OREGON STATE PLANE
 INTERNATIONAL FEET
 796106.76
 8542666.84

MONUMENT SET (PROCEDURES AND DESCRIPTION)

NEW ACCESSORIES FROM WHICH

- A 5/8" x 30" IRON ROD WITH A YELLOW PLASTIC CAP MKD "PLS LS 48490" LIES S 73°58'24" E, 5.72 FEET.
- A 5/8" x 30" IRON ROD WITH A YELLOW PLASTIC CAP MKD "PLS LS 48490" LIES S 04°40'51" W, 224.22 FEET.

LOCATION AND COMMENTS

FROM THE MOST NORTHEASTERLY CORNER OF LOOP RD. GO WEST 0.50 MILES TO A GRAVEL DRIVEWAY TO THE LEFT THEN GO SOUTH ALONG SAID DRIVEWAY 0.25 MILES TO CORNER

COMPASS DEC.

SURVEYOR'S SEAL

FIRM/AGENCY
 PRIMM LAND SURVEYING
 P.O. BOX 1322
 HERMISTON, OREGON 97838

REGISTERED
 PROFESSIONAL
 LAND SURVEYOR

PARTY CHIEF
 KEITH P. PRIMM

OREGON
 JULY 12, 2005
 KEITH P. PRIMM
 48490

NOTES

WITNESS
 KEITH P. PRIMM

WITNESS
 KEITH P. PRIMM

EXPIRATION DATE: 12/31/20

~~THA~~ 21-004-C

Ø1 DEC 20