

OREGON CORNER RESTORATION FORM

SECTION 11,12 TOWNSHIP 4 NORTH RANGE 29 EAST

G-21

COUNTY : UMATILLA DATE MAY/20

CORNER DESIGNATION

1/4 CORNER

X CONDITION REPORT ONLY
 NOT FOUND

RENEWED
 UNCOVERED
 SURVEYED IN
 REFERENCED

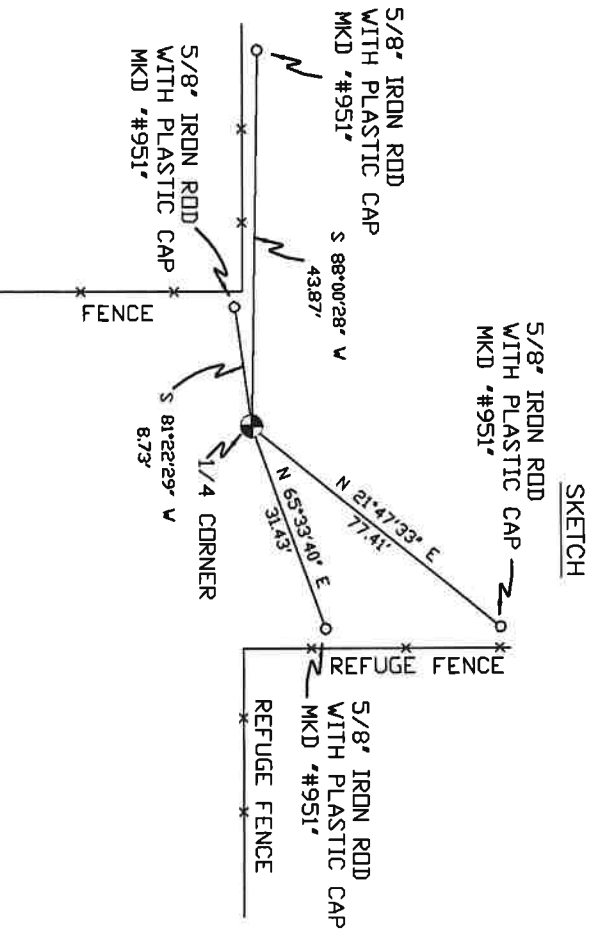
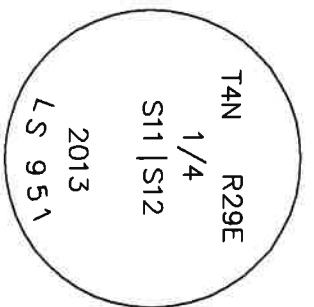
PREVIOUS RENEWALS / SURVEYS, ETC.

ORIGINALLY SURVEYED IN 1861 BY DAVENPORT UNDER CONTRACT #101. HE SET A POST IN A MOUND OF EARTH AND A CHARRED STAKE. EDWARDS SET A 2 3/8" BRASS CAP IN 2013.

MONUMENTS AND ACCESSORIES FOUND: CONDITION AND SOURCE

- A 5/8" IRON ROD WITH A PLASTIC CAP "#951" LIES S 88°00'28" W, 43.87 FEET.
- A 5/8" IRON ROD WITH A PLASTIC CAP "#951" LIES S 81°22'29" W, 8.73 FEET.
- A 5/8" IRON ROD WITH A PLASTIC CAP "#951" LIES N 65°33'40" E, 31.43 FEET.
- A 5/8" IRON ROD WITH A PLASTIC CAP "#951" LIES N 21°47'33" E, 77.41 FEET.
- A 2 3/8" BC STAMPED AS BELOW.

MONUMENT DETAIL



MONUMENT SET (PROCEDURES AND DESCRIPTION)

NAD 83/91
 OREGON STATE PLANE
 INTERNATIONAL FEET
 796203.20
 8547955.27

NEW ACCESSORIES FROM WHICH

LOCATION AND COMMENTS

FROM INTERSECTION OF WEST
 HIGHLAND EXTENSION AND LOOP
 RD. GO NORTH ON LOOP RD. 0.5
 MILES THEN GO EAST 0.5 MILES
 ALONG FENCE LINE TO CORNER.

COMPASS DEC.

SURVEYOR'S SEAL

FIRM/AGENCY
 PRIMM LAND SURVEYING
 P.O. BOX 1322
 HERMISTON, OREGON 97838

REGISTERED
 PROFESSIONAL
 LAND SURVEYOR

PARTY CHIEF
 PAUL P. PILCH

OREGON
 JULY 12, 2005
 KEITH P. PRIMM
 48490

NOTES

WITNESS
 KEITH P. PRIMM

EXPIRATION DATE: 12/31/20

21-004-c

\$1 DEC 20