

OREGON CORNER RESTORATION FORM

SECTION 7,8 TOWNSHIP 4 NORTH RANGE 29 EAST

G-5

COUNTY : UMATILLA DATE 02/02

CORNER DESIGNATION

1/4 CORNER

X CONDITION REPORT ONLY

- NOT FOUND
- RENEWED
- UNCOVERED
- SURVEYED IN
- REFERENCED

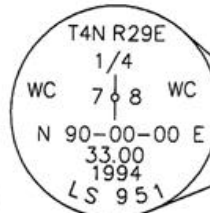
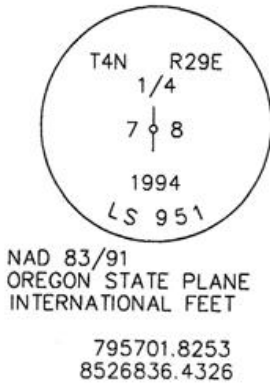
PREVIOUS RENEWALS / SURVEYS, ETC.

ORIGINALLY SURVEYED IN 1861 BY DAVENPORT UNDER CONTRACT #101. HE SET A POST IN A MOUND OF EARTH AND A CHARRED STAKE.
 IN 1994 EDWARDS SET A 1" x 30" IRON PIPE WITH A 2 3/8" BRASS CAP STAMPED AS BELOW BY SINGLE PROPORTION.

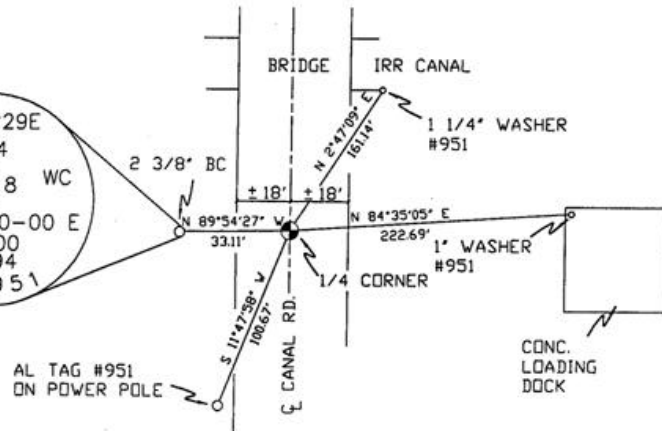
MONUMENTS AND ACCESSORIES FOUND: CONDITION AND SOURCE

A 2 3/8" BC STAMPED AS BELOW LIES N 89°54'27" W, 33.11 FEET.
 A 1 1/4" WASHER #951 GLUED TO SE COR. OF BRIDGE ABUTMENT LIES N 2°47'09" E, 161.14 FEET.
 A 1" WASHER #951 GLUED TO THE NW COR. OF LOADING DOCK LIES N 84°35'05" E, 222.69 FEET.
 AN ALUMINUM TAG #951 ON A POWER POLE LIES S 11°47'58" W, 100.67 FEET.

MONUMENT DETAIL



SKETCH



MONUMENT SET (PROCEDURES AND DESCRIPTION)

NEW ACCESSORIES FROM WHICH

LOCATION AND COMMENTS

FROM INTERSECTION OF HIGHLAND EXT. AND CANAL RD. GO NORTH ON CANAL 1/2 MILE TO CORNER.

COMPASS DEC.

FIRM/AGENCY
 PRIMM LAND SURVEYING
 P.O. BOX 1322
 HERMISTON, OREGON 97838

PARTY CHIEF
 KEITH P. PRIMM

NOTES

WITNESS
 BRIT L. PRIMM

SURVEYOR'S SEAL

REGISTERED
 PROFESSIONAL
 LAND SURVEYOR

BA LRZ
 OREGON
 JULY 13, 1999
 BRIT L. PRIMM
 48509

EXPIRATION DATE: 12/31/02

03-52-9