

OREGON CORNER RESTORATION FORM

SECTION 11,12,13,14 TOWNSHIP 4 NORTH RANGE 29 EAST J-21
 COUNTY : UMATILLA DATE MAY/20

CORNER DESIGNATION
 SECTION CORNER

CONDITION REPORT ONLY
 NOT FOUND
 RENEWED
 UNCOVERED
 SURVEYED IN
 REFERENCED

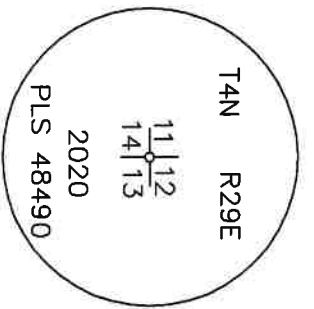
PREVIOUS RENEWALS / SURVEYS, ETC.

ORIGINALLY SURVEYED IN 1861 BY DAVENPORT UNDER CONTRACT #101. HE SET A POST IN A MOUND OF EARTH AND A CHARRED STAKE. IN 1905 KIMBRELL FOUND THE CORNER. ROBERTS SET A 2 3/8" BC IN 2011. NOT FOUND.

MONUMENTS AND ACCESSORIES FOUND: CONDITION AND SOURCE

A 5/8" IRON ROD WITH A PLASTIC CAP "UCPWD LS 2627" LIES N 63°02'07" W, 38.91 FEET.
 A 5/8" IRON ROD WITH A PLASTIC CAP "UCPWD LS 2627" LIES N 37°53'14" E, 22.51 FEET.
 A 5/8" IRON ROD WITH A PLASTIC CAP "UCPWD LS 2627" LIES S 18°50'27" E, 21.21 FEET.
 A 5/8" IRON ROD WITH A PLASTIC CAP "UCPWD LS 2627" LIES S 63°31'26" W, 41.98 FEET.

MONUMENT DETAIL

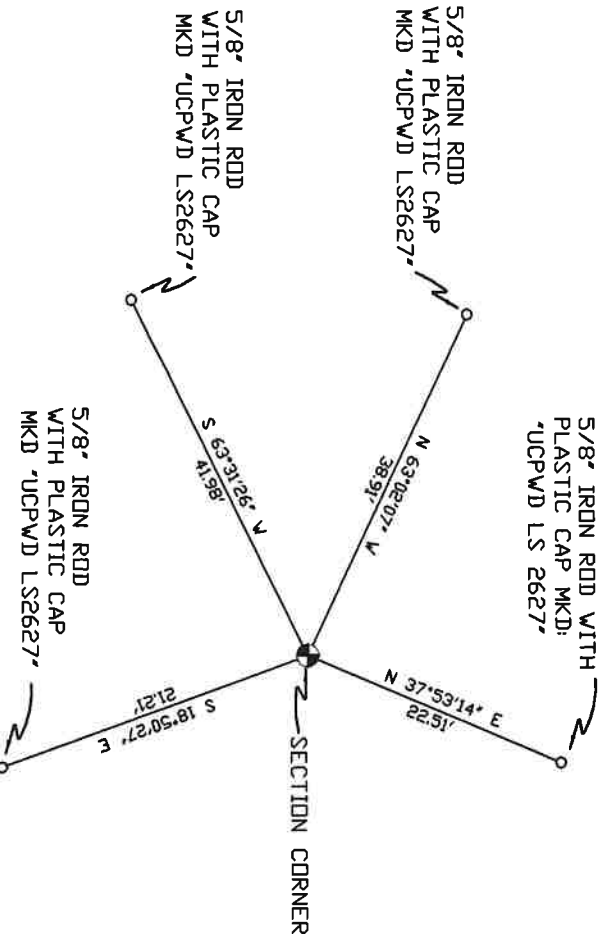


NAD 83/91
 OREGON STATE PLANE
 INTERNATIONAL FEET
 793559.18
 8548002.27

MONUMENT SET (PROCEDURES AND DESCRIPTION)

FROM EXISTING ACCESSORIES I SET A 5/8" X 30" IRON ROD WITH A 2" ALUMINUM CAP STAMPED AS ABOVE.

NEW ACCESSORIES FROM WHICH



SKETCH

LOCATION AND COMMENTS

FROM INTERSECTION OF HIGHLAND EXTENSION AND LOOP RD. GO EAST 0.5 MILES TO CORNER.

COMPASS DEC.

SURVEYOR'S SEAL

FIRM/AGENCY
 PRIMM LAND SURVEYING
 P.O. BOX 1322
 HERMISTON, OREGON 97838

REGISTERED
 PROFESSIONAL
 LAND SURVEYOR

PARTY CHIEF
 PAUL P. PILCH

NOTES

OREGON
 JULY 12, 2005
 KEITH P. PRIMM
 48490

WITNESS
 KEITH P. PRIMM

EXPIRATION DATE: 12/31/20

21-004-C

Ø1 DEC 20