

# OREGON CORNER RESTORATION FORM

SECTION 7,18 TOWNSHIP 4 NORTH RANGE 29 EAST

J-3

COUNTY : UMATILLA DATE 02/02

CORNER DESIGNATION

1/4 CORNER

CONDITION REPORT ONLY

NOT FOUND

RENEWED

UNCOVERED

SURVEYED IN

REFERENCED

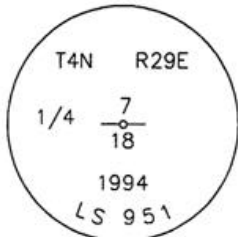
PREVIOUS RENEWALS / SURVEYS, ETC.

ORIGINALLY SURVEYED IN 1861 BY DAVENPORT UNDER CONTRACT #101. HE SET A POST IN A MOUND OF EARTH AND A CHARRED STAKE.  
IN 1995 EDWARDS SET A 1" x 30" IRON PIPE WITH A 2 3/8" BRASS CAP STAMPED AS BELOW, BY SINGLE PROPORTION.

MONUMENTS AND ACCESSORIES FOUND: CONDITION AND SOURCE

AN ALUMINUM TAG #951 ON A POWER POLE LIES N 88°12'48" W, 57.38 FEET.  
AN ALUMINUM TAG #951 ON A 29" LOCUST TREE LIES N 82°30'47" E, 38.73 FEET.  
AN ALUMINUM TAG #951 ON A POWER POLE LIES S 36°50'53" E, 54.79 FEET.

MONUMENT DETAIL

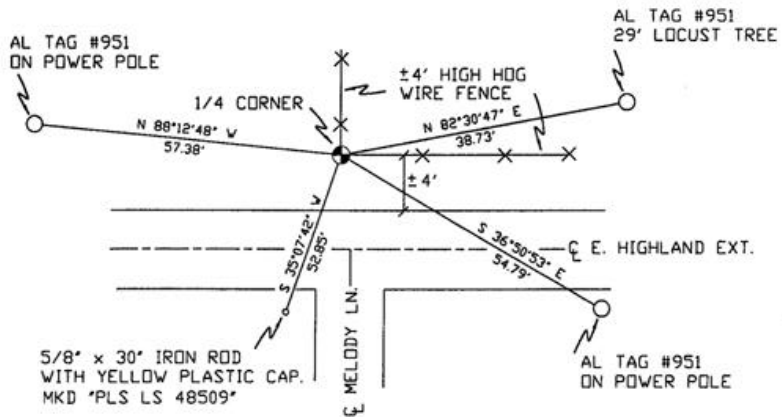


NAD 83/91  
OREGON STATE PLANE  
INTERNATIONAL FEET

792990.6261  
8524222.6882

N.T.S

SKETCH



MONUMENT SET ( PROCEDURES AND DESCRIPTION )

NEW ACCESSORIES FROM WHICH

A 5/8" x 30" IRON ROD WITH A YELLOW PLASTIC CAP MKD "PLS LS 48509" LIES S 35°07'42" W, 52.85 FEET.

LOCATION AND COMMENTS

FROM INTERSECTION OF CANAL RD. WITH E. HIGHLAND EXT. GO WEST ON HIGHLAND 1/2 MILE TO CORNER.

COMPASS DEC.

FIRM/AGENCY  
PRIMM LAND SURVEYING  
P.O. BOX 1322  
HERMISTON, OREGON 97838

PARTY CHIEF  
KEITH P. PRIMM

NOTES

WITNESS  
BRIT L. PRIMM

SURVEYOR'S SEAL

REGISTERED  
PROFESSIONAL  
LAND SURVEYOR

*Brit L. Primm*  
OREGON  
JULY 13, 1999  
BRIT L. PRIMM  
48509

EXPIRATION DATE:12/31/02

03-52-9