

OREGON CORNER RESTORATION FORM

SECTION 7,8,17,18 TOWNSHIP 4 NORTH RANGE 29 EAST J-5

COUNTY : UMATILLA DATE 02/02

CORNER DESIGNATION

SECTION CORNER

CONDITION REPORT ONLY
 NOT FOUND
 RENEWED
 UNCOVERED
 SURVEYED IN
 REFERENCED

PREVIOUS RENEWALS / SURVEYS, ETC.

ORIGINALLY SURVEYED IN 1861 BY DAVENPORT UNDER CONTRACT #101. HE SET A POST IN A MOUND OF EARTH AND A CHARRED STAKE.
 IN 1975 KRUMBEIN SET A 5/8" IRON ROD, SEE SURVEY FOR PERKINS.
 IN 1994 EDWARDS SET A 1" x 30" IRON PIPE WITH A 2 3/8" BRASS CAP STAMPED AS BELOW BY HOLDING KRUMBEIN'S EASTING AND BY PROPORTIONING FOR NORTHING.

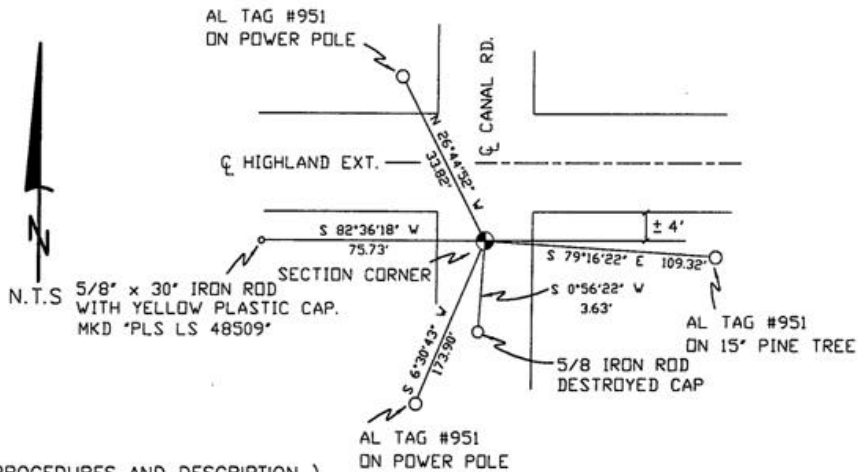
MONUMENTS AND ACCESSORIES FOUND: CONDITION AND SOURCE

AN ALUMINUM TAG #951 ON A POWER POLE LIES N 26°44'52" W, 33.82 FEET.
 AN ALUMINUM TAG #951 ON A 15" PINE TREE LIES S 79°16'22" E, 109.32 FEET.
 AN ALUMINUM TAG #951 ON A POWER POLE LIES S 6°30'43" W, 173.90 FEET.
 A 5/8" IRON ROD (CAP DESTROYED) LIES S 00°56'22" W, 3.63 FEET.

MONUMENT DETAIL



SKETCH



MONUMENT SET (PROCEDURES AND DESCRIPTION)

NEW ACCESSORIES FROM WHICH

A 5/8" x 30" IRON ROD WITH A YELLOW PLASTIC CAP MKD "PLS LS 48509" LIES S 82°36'18" W, 75.73 FEET.

LOCATION AND COMMENTS

AT INTERSECTION OF
 HIGHLAND EXT. AND
 CANAL RD.

COMPASS DEC.

FIRM/AGENCY
 PRIMM LAND SURVEYING
 P.O. BOX 1322
 HERMISTON, OREGON 97838

PARTY CHIEF
 KEITH P. PRIMM

NOTES

WITNESS
 BRIT L. PRIMM

SURVEYOR'S SEAL

REGISTERED
 PROFESSIONAL
 LAND SURVEYOR

Brit L. Primm

OREGON
 JULY 13, 1999
 BRIT L. PRIMM
 48509

EXPIRATION DATE: 12/31/02

03-52-9