

# OREGON CORNER RESTORATION FORM

SECTION 8,9,16,17 TOWNSHIP 4 NORTH RANGE 29 EAST J-9

COUNTY : UMATILLA DATE 02/02

CORNER DESIGNATION

SECTION CORNER

- CONDITION REPORT ONLY
- NOT FOUND
- RENEWED
- UNCOVERED
- SURVEYED IN
- REFERENCED

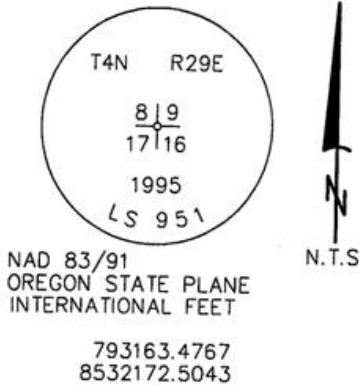
PREVIOUS RENEWALS / SURVEYS, ETC.

ORIGINALLY SURVEYED IN 1861 BY DAVENPORT UNDER CONTRACT #101. HE SET A POST IN A MOUND OF EARTH AND A CHARRED STAKE.  
 IN 1974 KRUMBEIN SET A 2 1/2" BC AND WC, SEE SURVEY FOR PAT WALCHLI.  
 IN 1995 EDWARDS SET A 5/8" x 30" IRON ROD WITH A 2" ALUM. CAP STAMPED AS BELOW USING KRUMBEINS NORTHING AND PORPORTIONING THE EASTING.

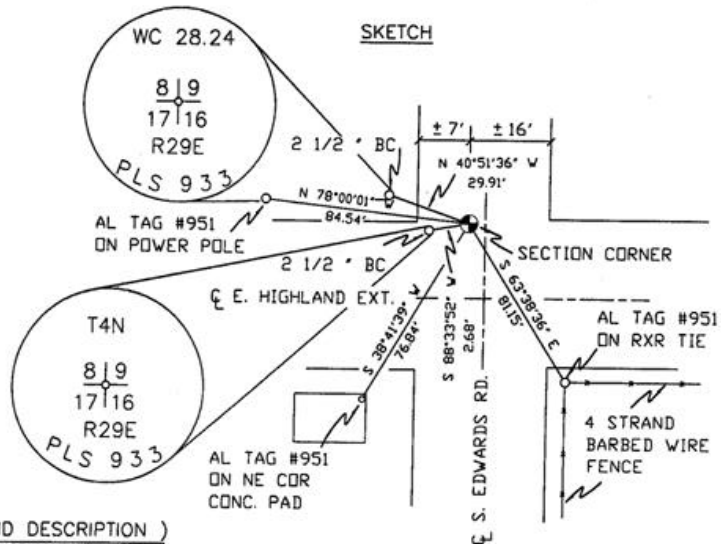
MONUMENTS AND ACCESSORIES FOUND: CONDITION AND SOURCE

A 2 1/2" BC STAMPED AS BELOW LIES S 88°33'52" W, 2.68 FEET.  
 AN ALUMINUM TAG #951 ON A POWER POLE LIES N 78°00'01" W, 84.54 FEET.  
 AN ALUMINUM TAG #951 GLUED TO THE NE COR. OF CONC. PAD LIES S 38°41'39" W, 76.84 FEET.  
 AN ALUMINUM TAG #951 ON R X R TIE FENCE POST LIES S 63°38'36" E, 81.15 FEET.  
 A 2 1/2" BC STAMPED AS BELOW LIES N 40°51'36" W, 29.91 FEET.

MONUMENT DETAIL



SKETCH



MONUMENT SET ( PROCEDURES AND DESCRIPTION )

NEW ACCESSORIES FROM WHICH

LOCATION AND COMMENTS

AT INTERSECTION OF  
 E. HIGHLAND EXT.  
 AND S. EDWARDS RD.

COMPASS DEC.

FIRM/AGENCY  
 PRIMM LAND SURVEYING  
 P.O. BOX 1322  
 HERMISTON, OREGON 97838

PARTY CHIEF  
 KEITH P. PRIMM

NOTES

WITNESS  
 BRIT L. PRIMM

SURVEYOR'S SEAL

REGISTERED  
 PROFESSIONAL  
 LAND SURVEYOR

*Brit L. Primm*  
 OREGON  
 JULY 13, 1999  
 BRIT L. PRIMM  
 48509

EXPIRATION DATE: 12/31/02

03-52-9