

OREGON CORNER RESTORATION FORM

L-1

Section 18 Township 4 N Range 29 E

County UMATILLA Date 3/95

CORNER DESIGNATION

W 1/4 Cor

- Condition Report Only
- Not Found
- Renewed
- Unrecorded
- Surveyed In
- Referenced Out

Previous Renewals/Surveys, etc. ORIG Sur Campbell 1860 Cont # 95
he set post in Mound

1980 Krumbein sur. # 5-156 set 2 1/2" B.C.

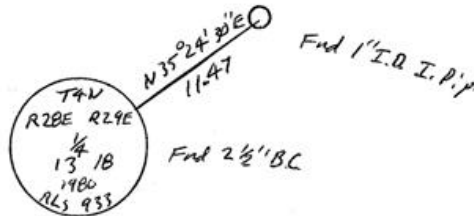
Monument(s) & Accessories Found: (Condition and Source)

End Krumbein 2 1/2" B.C. Below surface of Rd.

End 1" I.D. Iron Pipe N 35° 24' 30" E 11.47' from Cor

Monument Detail

Sketch



Monument Set (Procedures and Description)

New Accessories

Alum Tag in RR Tie F.C. Bears N 36° 11' 20" W 36.35 Ft.

1/2" x 3/8" Rebar 8" below surface Bears N 89° 34' 10" E 21.07 Ft.

1" x 3/8" I. Pipe with 2 3/8" B.C. Bears S 89° 34' 10" W 19.93 Ft

Location & Comments

From Intersection
Highland Extension &
OTT Rd go south
on OTT 1/2 mile
to Cor.

Compass Declination _____

Firm/Agency EDWARDS

SURVEYING

Address P.O. Box 763

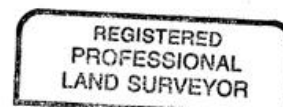
Hermiston, OR 97838

Party Chief D. Edwards

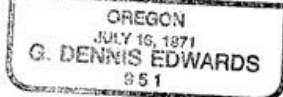
Notes _____

Witness J. Coppock

Surveyor's Seal



J. Dennis Edwards



RENEWS 12/31/95

RECEIVED BY

Umatilla County Surveyor

Date _____

Rec'd By _____

No. 95-59-B