

OREGON CORNER RESTORATION FORM

SECTION 15,16 TOWNSHIP 4 NORTH RANGE 29 EAST

L-13

COUNTY : UMATILLA DATE MAY/20

CORNER DESIGNATION

1/4 CORNER

- CONDITION REPORT ONLY
- NOT FOUND
- RENEWED
- UNCOVERED
- SURVEYED IN
- REFERENCED

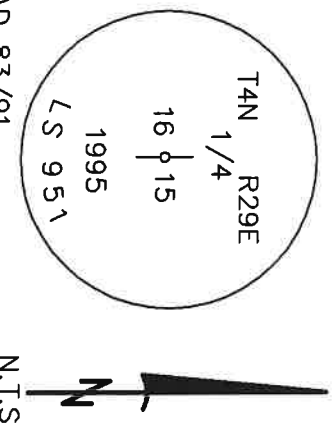
PREVIOUS RENEWALS / SURVEYS, ETC.

ORIGINALLY SURVEYED IN 1861 BY DAVENPORT UNDER CONTRACT #101. HE SET A POST IN A MOUND OF EARTH AND A CHARRED STAKE. IN 1995 EDWARDS SET A 1" x 30" IRON PIPE WITH A 2 3/8" BC STAMPED AS BELOW BY SINGLE PROPORTION.

MONUMENTS AND ACCESSORIES FOUND: CONDITION AND SOURCE

- A 1/2" IRON ROD WITH AN ALUMINUM CAP LIES N 89°08'24" E, 10.01 FEET.
- A 1 1/4" IRON ROD LIES S 0°14'25" E, 9.99 FEET.
- AN ALUMINUM TAG #951 ON A RXR TIE LIES S 8°30'20" W, 117.55 FEET.
- A 5/8" IRON ROD WITH A PLASTIC CAP LIES S 88°55'36" W, 10.01 FEET.
- A 2' ANGLE IRON WITH WITNESS SIGN LIES N 0°05'42" W, 1.20 FEET.
- A 2 3/8" BC STAMPED AS BELOW.

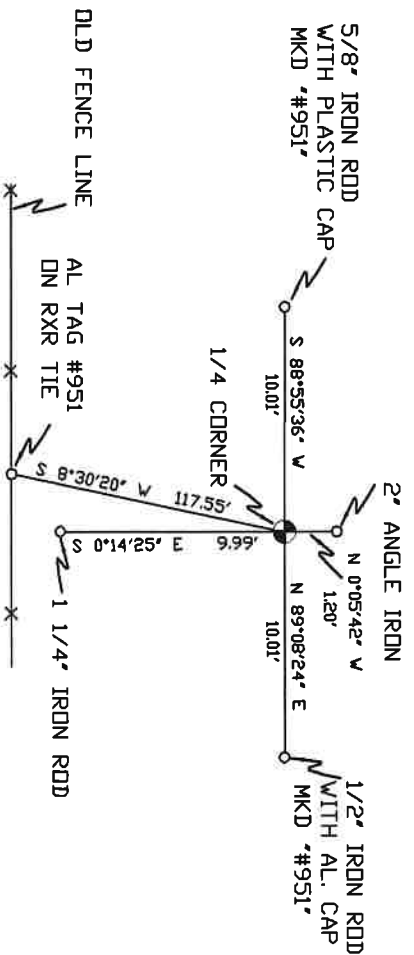
MONUMENT DETAIL



NAD 83/91
OREGON STATE PLANE
INTERNATIONAL FEET

790685.23
8537452.54

MONUMENT SET (PROCEDURES AND DESCRIPTION)



SKETCH

NEW ACCESSORIES FROM WHICH

LOCATION AND COMMENTS

FROM INTERSECTION OF HIGHLAND EXT. AND EDWARDS RD. GO EAST ON HIGHLAND TO POWER LINE THEN GO SOUTH 1/2 MILE TO CORNER.

COMPASS DEC.

SURVEYOR'S SEAL

FIRM/AGENCY
PRIMM LAND SURVEYING
P.O. BOX 1322
HERMISTON, OREGON 97838

REGISTERED
PROFESSIONAL
LAND SURVEYOR

PARTY CHIEF
BRIT L. PRIMM

NOTES

OREGON
JULY 12, 2005
KEITH P. PRIMM
48490

WITNESS
KETH P. PRIMM

EXPIRATION DATE: 12/31/20

TAM 21-004-C

Φ1 DEC 20