

OREGON CORNER RESTORATION FORM

L-13

Section 16 Township 4 N Range 29 E

County UMATILLA Date 3/95

CORNER DESIGNATION

E. 1/4 Cor

- Condition Report Only
- Not Found
- Renewed
- Unrecorded
- Surveyed In
- Referenced Out

Previous Renewals/Surveys, etc. ORIG SUR. DAVENPORT 1861 # 101
He set a post in mound with charred stake

Monument(s) & Accessories Found: (Condition and Source)

Nothing Found

Monument Detail

Sketch



Monument Set (Procedures and Description)

By single Proportion set 1"x30" I. Pipe with 2 3/8" BC
Stamped as above

SEE MY 1992-1 COUNTY PUBLIC MONUMENTATION SUR.

New Accessories

A 1/2"x24" rebar with Alum Cap Bears N 89° 01' 12" E 10.00 FT.

A 1/4"x33" rebar Bears S 0° 16' 57" E 10.00 FT.

An Alum tag # 951 in RR Tie FC. Bears S 0° 23' 50" W 117.54 FT

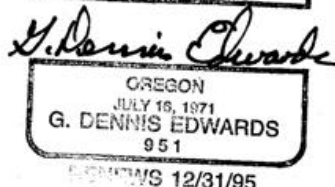
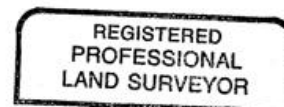
A 5/8"x30" rebar with Plastic Cap Bears S 89° 01' 12" W 10.00 ft

A 2"x48" X Iron with Witness sign Bears North 100 Ft.

Location & Comments

From Intersection of Highland & Edwards Rds Compass Declination _____
Go East on Highland Firm/Agency EDWARDS SURVEYING
to Power line then Address P. Box 763
go South 1/2 mile to HERMISTON, OR 97838
Corner Party Chief D. EDWARDS
 Notes _____
 Witness J. COPPOCK

Surveyor's Seal



Umatilla County Surveyor
 Date _____
 Rec'd By _____
 No. 95-5938