

OREGON CORNER RESTORATION FORM

SECTION 13.18 TOWNSHIP 4 NORTH RANGE 29.30 EAST

L-25

COUNTY : UMATILLA DATE MAY/20

CORNER DESIGNATION

1/4 CORNER

CONDITION REPORT ONLY
 NOT FOUND

RENEWED
 UNCOVERED
 SURVEYED IN
 REFERENCED

PREVIOUS RENEWALS / SURVEYS, ETC.

ORIGINALLY SURVEYED IN 1860 BY CAMPBELL UNDER CONTRACT #95. HE SET A CHARRED STAKE WITH RAISED MOUND OF EARTH AND PITS. EDWARDS SET A 2 3/8" BC IN 2013.

MONUMENTS AND ACCESSORIES FOUND: CONDITION AND SOURCE

- A 5/8" IRON ROD WITH A PLASTIC CAP "#951" LIES S 3°53'01" W, 200.46 FEET.
- A 5/8" IRON ROD WITH A PLASTIC CAP "#951" LIES S 2°56'24" E, 171.13 FEET.
- A 5/8" IRON ROD WITH A PLASTIC CAP "#951" LIES N 86°05'18" E, 32.89 FEET.
- A 5/8" IRON ROD WITH A PLASTIC CAP "#951" LIES N 2°04'31" E, 175.71 FEET.
- A 2 3/8" BC STAMPED AS BELOW.

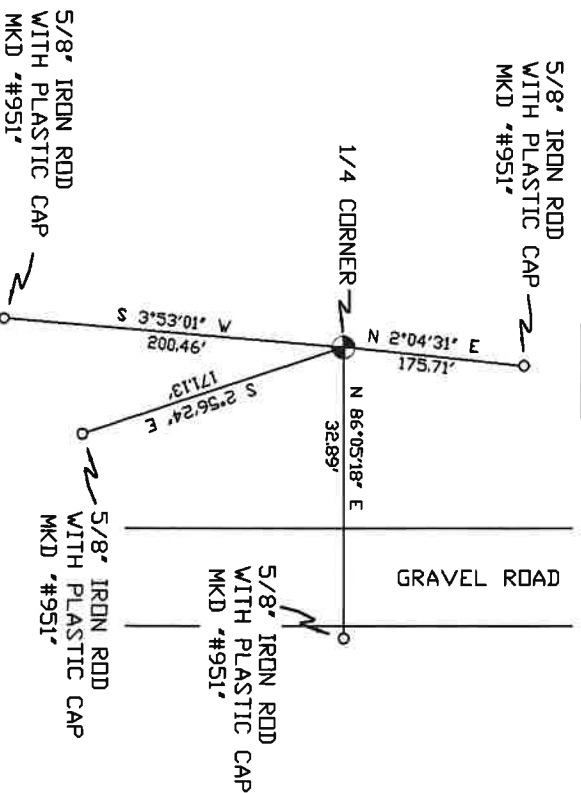
MONUMENT DETAIL



NAD 83/91
 OREGON STATE PLANE
 INTERNATIONAL FEET
 791002.33
 8553343.45

MONUMENT SET (PROCEDURES AND DESCRIPTION)

SKETCH



NEW ACCESSORIES FROM WHICH

LOCATION AND COMMENTS

FROM INTERSECTION OF LOOP RD. AND KOSMOS RD. GO EAST ON KOSMOS RD. 1.5 MILES THEN SOUTH ALONG TRANSMISSION LINE 0.5 MILES TO CORNER.

COMPASS DEC.

SURVEYOR'S SEAL

FIRM/AGENCY

PRIMM LAND SURVEYING
 P.O. BOX 1322
 HERMISTON, OREGON 97838

REGISTERED
 PROFESSIONAL
 LAND SURVEYOR

PARTY CHIEF
 PAUL P. PILCH

NOTES

OREGON
 JULY 12, 2005
 KEITH P. PRIMM
 48490

WITNESS
 KETH P. PRIMM

EXPIRATION DATE: 12/31/20

21-004-c

Φ1 DEC 20