

# OREGON CORNER RESTORATION FORM

SECTION 16,17 TOWNSHIP 4 NORTH RANGE 29 EAST L-9  
 COUNTY : UMATILLA DATE 02/02

CORNER DESIGNATION

1/4 CORNER

- CONDITION REPORT ONLY
- NOT FOUND
- RENEWED
- UNCOVERED
- SURVEYED IN
- REFERENCED

PREVIOUS RENEWALS / SURVEYS, ETC.

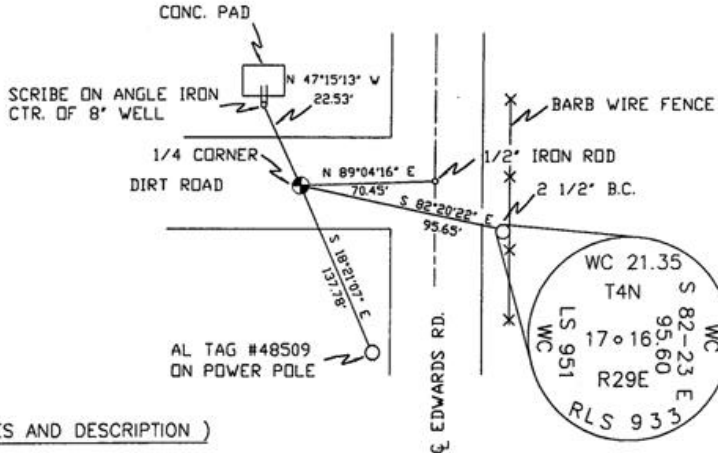
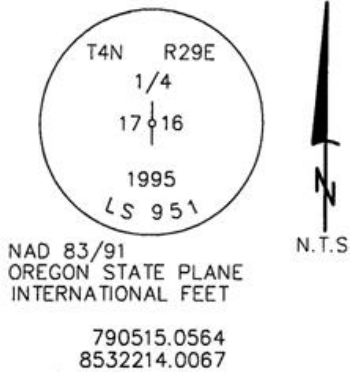
ORIGINALLY SURVEYED IN 1861 BY DAVENPORT UNDER CONTRACT #101. HE SET A POST IN A MOUND OF EARTH AND A CHARRED STAKE.  
 IN 1974 KRUMBEIN SET A BC, SEE SURVEY FOR PAT WALCHLI.  
 IN 1995 EDWARDS SET A 1" x 30" IRON PIPE WITH A 2 3/8" BRASS CAP STAMPED AS BELOW, 5" BELOW SURFACE OF DIRT ROAD, BY SINGLE PROPORTION.

MONUMENTS AND ACCESSORIES FOUND: CONDITION AND SOURCE

THE CENTER OF AN 8" WELL MARKED BY A SCRIBE ON A PIECE OF ANGLE IRON WELDED TO THE TOP OF AN 8" PIPE LIES N 47°15'13" W, 22.53 FEET.  
 A 1/2" IRON ROD LIES N 89°04'16" E, 70.45 FEET.  
 A 2 1/2" B.C. STAMPED AS BELOW LIES S 82°20'22" E, 95.65 FEET.

MONUMENT DETAIL

SKETCH



MONUMENT SET ( PROCEDURES AND DESCRIPTION )

NEW ACCESSORIES FROM WHICH

A 1" x 1" ALUMINUM TAG MKD "PLS LS 48509" ON A POWER POLE LIES S 18°21'07" E, 137.78 FEET.

LOCATION AND COMMENTS

FROM INTERSECTION OF HIGHLAND EXT. WITH EDWARDS RD. GO SOUTH ON EDWARDS 1/2 MILE TO CORNER. CORNER LIES 70' WEST OF RD.

COMPASS DEC.

FIRM/AGENCY  
 PRIMM LAND SURVEYING  
 P.O. BOX 1322  
 HERMISTON, OREGON 97838

PARTY CHIEF  
 KEITH P. PRIMM

NOTES

WITNESS  
 BRIT L. PRIMM

SURVEYOR'S SEAL

REGISTERED PROFESSIONAL LAND SURVEYOR

*Brit L. Primm*

OREGON  
 JULY 13, 1999  
 BRIT L. PRIMM  
 48509

EXPIRATION DATE:12/31/02

03-52-9