

OREGON CORNER RESTORATION FORM

SECTION 16,17 TOWNSHIP 4 NORTH RANGE 29 EAST

L-9

COUNTY : UMATILLA DATE MAY/20

CORNER DESIGNATION

1/4 CORNER

CONDITION REPORT ONLY

NOT FOUND

RENEWED

UNCOVERED

SURVEYED IN

REFERENCED

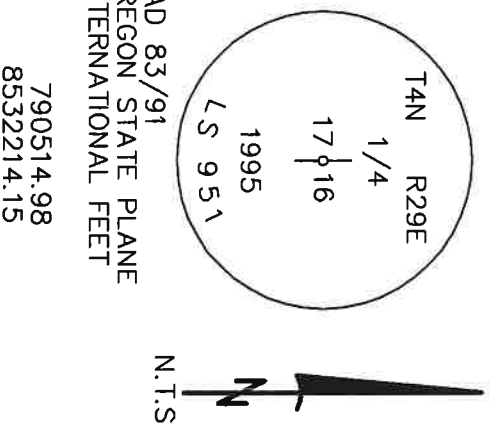
PREVIOUS RENEWALS / SURVEYS, ETC.

ORIGINALLY SURVEYED IN 1861 BY DAVENPORT UNDER CONTRACT #101. HE SET A POST IN A MOUND OF EARTH AND A CHARRED STAKE.
 IN 1974 KRUMBEIN SET A BC, SEE SURVEY FOR PAT WALCHLI.
 IN 1995 EDWARDS SET A 1" x 30" IRON PIPE WITH A 2 3/8" BC STAMPED AS BELOW,
 5" BELOW SURFACE OF DIRT ROAD, BY SINGLE PROPORTION.

MONUMENTS AND ACCESSORIES FOUND: CONDITION AND SOURCE

- A 1/2" IRON ROD LIES N 89°04'16" E, 70.45 FEET.
- A 2 1/2" B.C. STAMPED AS BELOW LIES S 82°20'22" E, 95.65 FEET.
- A 1" x 1" ALUMINUM TAG MKD "PLS LS 48509" ON A POWER POLE LIES S 18°21'07" E, 137.78 FEET.
- A 2 3/8" BC STAMPED AS BELOW.

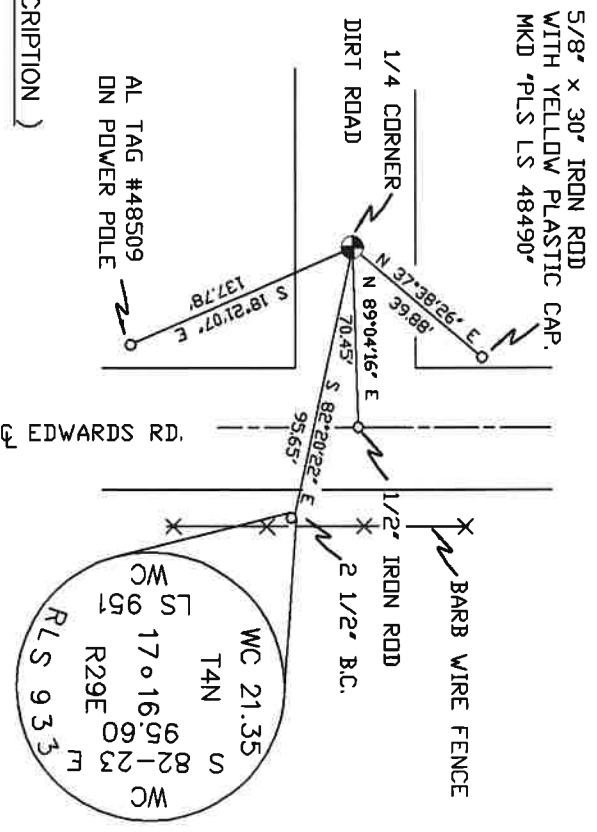
MONUMENT DETAIL



NAD 83/91
 OREGON STATE PLANE
 INTERNATIONAL FEET

790514.98
 8532214.15

MONUMENT SET (PROCEDURES AND DESCRIPTION)



SKETCH

NEW ACCESSORIES FROM WHICH

A 5/8" x 30" IRON ROD WITH A YELLOW PLASTIC CAP MKD "PLS LS 48490" LIES N 37°38'26" E, 39.88 FEET.

LOCATION AND COMMENTS

FROM INTERSECTION OF HIGHLAND
 EXT. WITH EDWARDS RD. GO SOUTH
 ON EDWARDS 1/2 MILE TO CORNER.
 CORNER LIES 70' WEST OF RD.

COMPASS DEC.

SURVEYOR'S SEAL

FIRM/AGENCY
 PRIMM LAND SURVEYING
 P.O. BOX 1322
 HERMISTON, OREGON 97838

REGISTERED
 PROFESSIONAL
 LAND SURVEYOR

PARTY CHIEF
 BRIT L. PRIMM

NOTES

OREGON
 JULY 12, 2005
 KEITH P. PRIMM
 48490

WITNESS
 KEITH P. PRIMM

EXPIRATION DATE: 12/31/20

TMAA 21-004-C

Φ 1 DEC 20