

OREGON CORNER RESTORATION FORM

SECTION 16,21 TOWNSHIP 4 NORTH RANGE 29 EAST N-11
 COUNTY : UMATILLA DATE 01/02

CORNER DESIGNATION

1/4 CORNER

X CONDITION REPORT ONLY

- NOT FOUND
- RENEWED
- UNCOVERED
- SURVEYED IN
- REFERENCED

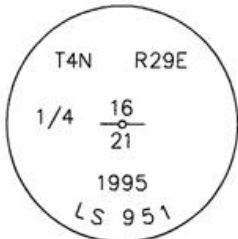
PREVIOUS RENEWALS / SURVEYS, ETC.

ORIGINALLY SURVEYED IN 1861 BY DAVENPORT UNDER CONTRACT #101. HE SET A POST IN A MOUND OF EARTH AND A CHARRED STAKE.
 IN 1995 EDWARDS SET A 1" x 30" IRON PIPE WITH A 2 3/8" BRASS CAP STAMPED AS BELOW, BY SINGLE PROPORTION.

MONUMENTS AND ACCESSORIES FOUND: CONDITION AND SOURCE

- A 2" x 48" ANGLE IRON WITH WITNESS SIGN LIES N 03°34'22" E, 1.25 FEET.
- A 5/8" x 30" IRON ROD WITH A PLASTIC CAP MKD "#951" LIES S 89°09'40" W, 10.08 FEET.
- A 1 1/4" x 33" IRON ROD LIES S 00°01'36" W, 10.07 FEET.
- A 1/2" x 24" IRON ROD WITH ALUM. CAP MKD #951 LIES N 88°47'18" E, 10.07 FEET.

MONUMENT DETAIL

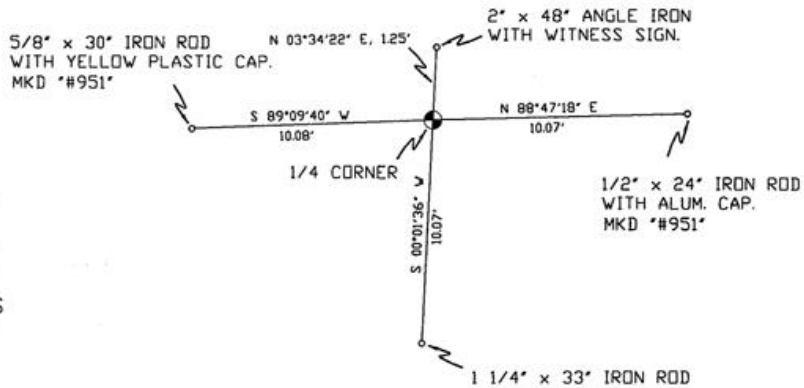


NAD 83/91
 OREGON STATE PLANE
 INTERNATIONAL FEET

787953.6159
 8534880.5833

N.T.S

SKETCH



MONUMENT SET (PROCEDURES AND DESCRIPTION)

NEW ACCESSORIES FROM WHICH

LOCATION AND COMMENTS

FROM INTERSECTION OF HIGHLAND EXTENSION WITH EDWARDS ROAD GO SOUTH ON EDWARDS ROAD 1 MILE THEN EAST ACROSS FIELD TO CORNER 1/2 MILE.

COMPASS DEC.

FIRM/AGENCY
 PRIMM LAND SURVEYING
 P.O. BOX 1322
 HERMISTON, OREGON 97838

PARTY CHIEF
 KEITH P. PRIMM

NOTES

WITNESS
 BRIT L. PRIMM

RECEIVED BY

Umatilla County Survey

Date 2-02

Rec'd By KK

No. 02-49-a

SURVEYOR'S SEAL

REGISTERED
 PROFESSIONAL
 LAND SURVEYOR

Brit L. Primm

OREGON
 JULY 13, 1999
 BRIT L. PRIMM
 48509

EXPIRATION DATE: 12/31/02