

OREGON CORNER RESTORATION FORM

SECTION 16,15,22,21 TOWNSHIP 4 NORTH RANGE 29 EAST N-13

COUNTY : UMATILLA DATE 11/01

CORNER DESIGNATION

SECTION CORNER

CONDITION REPORT ONLY

NOT FOUND

RENEWED

UNCOVERED

SURVEYED IN

REFERENCED

PREVIOUS RENEWALS / SURVEYS, ETC.

ORIGINALLY SURVEYED IN 1861 BY DAVENPORT UNDER CONTRACT #101. HE SET A POST IN A MOUND OF EARTH AND A CHARRED STAKE.

IN 1995 EDWARDS SET A 1" x 30" IRON PIPE WITH A 2 3/8" BRASS CAP BY DOUBLE PROPORTION.

MONUMENTS AND ACCESSORIES FOUND: CONDITION AND SOURCE

A 5/8" x 30" IRON ROD WITH A YELLOW PLASTIC CAP MKD "951" LIES S 89°06'30" W, 9.97 FEET

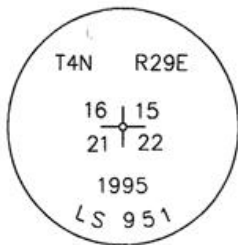
A 6" T POST DRIVEN 30" INTO GROUND LIES N 3°35'59" E, 0.96 FEET.

A 1/2" x 24" IRON ROD WITH AN ALUMINUM CAP LIES N 89°02'18" E, 9.97 FEET.

A 1 1/4" x 33" IRON ROD WITH AN ALUMINUM CAP LIES S 0°02'26" E, 9.99 FEET.

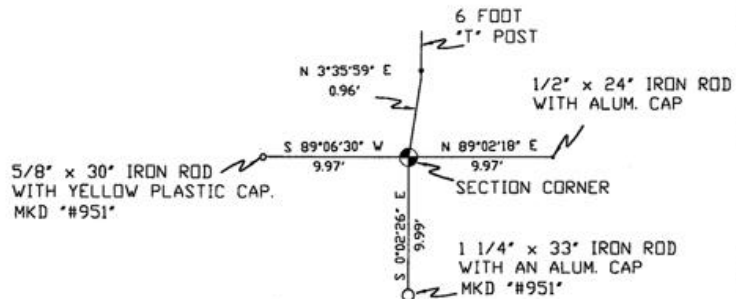
MONUMENT DETAIL

SKETCH



NAD 83/91
OREGON STATE PLANE
INTERNATIONAL FEET

788040.7668
8537506.1138



MONUMENT SET (PROCEDURES AND DESCRIPTION)

NEW ACCESSORIES FROM WHICH

LOCATION AND COMMENTS

FROM INTERSECTION OF HIGHLAND EXTENSION WITH EDWARDS ROAD GO SOUTH 1 MILE THEN GO EAST ACROSS FIELD 1 MILE TO CORNER.

COMPASS DEC.

FIRM/AGENCY
PRIMM LAND SURVEYING
P.O. BOX 1322
HERMISTON, OREGON 97838

PARTY CHIEF
KEITH P. PRIMM

NOTES

WITNESS
BRIT L. PRIMM

RECEIVED BY

Umatilla County Surveyor

Date 12-01

Rec'd By KR

No. 01-213-9

SURVEYOR'S SEAL

REGISTERED
PROFESSIONAL
LAND SURVEYOR

Brit L. Primm

OREGON
JULY 13, 1999
BRIT L. PRIMM
48509

EXPIRATION DATE: 12/31/02