

OREGON CORNER RESTORATION FORM

SECTION 16,15,22,21 TOWNSHIP 4 NORTH RANGE 29 EAST N-13

COUNTY : UMATILLA DATE MAY/20

CORNER DESIGNATION

SECTION CORNER

- CONDITION REPORT ONLY
- NOT FOUND
- RENEWED
- UNCOVERED
- SURVEYED IN
- REFERENCED

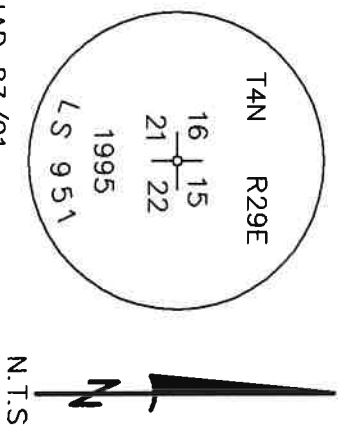
PREVIOUS RENEWALS / SURVEYS, ETC.

ORIGINALLY SURVEYED IN 1861 BY DAVENPORT UNDER CONTRACT #101. HE SET A POST IN A MOUND OF EARTH AND A CHARRED STAKE.
IN 1995 EDWARDS SET A 1" x 30" IRON PIPE WITH A 2 3/8" BC BY DOUBLE PROPORTION.

MONUMENTS AND ACCESSORIES FOUND: CONDITION AND SOURCE

- A 5/8" IRON ROD WITH A YELLOW PLASTIC CAP MKD "951" LIES S 89°06'30" W, 9.97 FEET
- A T POST DRIVEN INTO GROUND LIES N 3°35'59" E, 0.96 FEET.
- A 1/2" IRON ROD WITH AN ALUMINUM CAP LIES N 89°02'18" E, 9.97 FEET.
- A 1 1/4" IRON ROD WITH AN ALUMINUM CAP LIES S 0°02'26" E, 9.99 FEET.
- A 2 3/8" BC STAMPED AS BELOW.

MONUMENT DETAIL

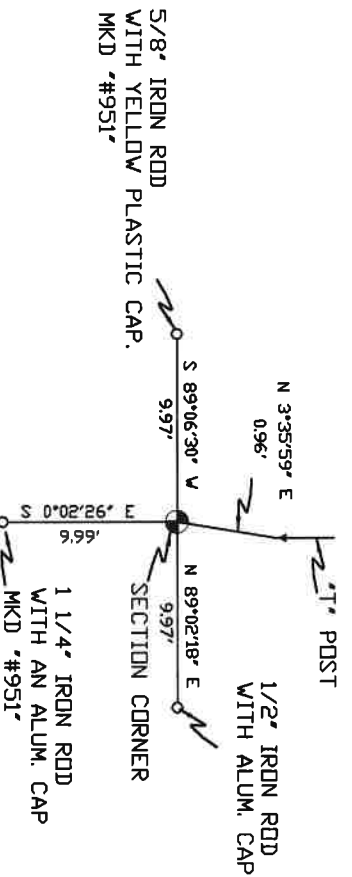


NAD 83/91
OREGON STATE PLANE
INTERNATIONAL FEET

788040.80
8537506.22

MONUMENT SET (PROCEDURES AND DESCRIPTION)

SKETCH



NEW ACCESSORIES FROM WHICH

LOCATION AND COMMENTS

FROM INTERSECTION OF HIGHLAND
EXTENSION WITH EDWARDS ROAD
GO SOUTH 1 MILE THEN GO EAST
ACROSS FIELD 1 MILE TO CORNER.

COMPASS DEC.

SURVEYOR'S SEAL

FIRM/AGENCY
PRIMM LAND SURVEYING
P.O. BOX 1322
HERMISTON, OREGON 97838

REGISTERED
PROFESSIONAL
LAND SURVEYOR

PARTY CHIEF
BRIT L. PRIMM

NOTES

OREGON
JULY 12, 2005
KEITH P. PRIMM
48490

WITNESS
KETH P. PRIMM

EXPIRATION DATE: 12/31/20

TMA

21-004-e

01 DEC 20