

OREGON CORNER RESTORATION FORM

SECTION 15,22 TOWNSHIP 4 NORTH RANGE 29 EAST

N-15

COUNTY : UMATILLA DATE 11/01

CORNER DESIGNATION

1/4 CORNER

CONDITION REPORT ONLY

NOT FOUND

RENEWED

UNCOVERED

SURVEYED IN

REFERENCED

PREVIOUS RENEWALS / SURVEYS, ETC.

ORIGINALLY SURVEYED IN 1861 BY DAVENPORT UNDER CONTRACT #101. HE SET A POST IN A MOUND OF EARTH AND A CHARRED STAKE.
IN 1998 EDWARDS SET A 1" x 30" IRON PIPE WITH A 2 3/8" BRASS CAP BY SINGLE PROPORTION.

MONUMENTS AND ACCESSORIES FOUND: CONDITION AND SOURCE

A 5/8" x 30" IRON ROD WITH A YELLOW PLASTIC CAP MKD "951" LIES N 00°13'27" E, 21.73 FEET

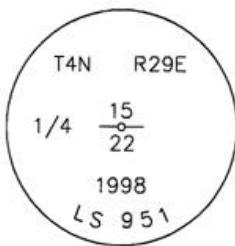
A 5/8" x 30" IRON ROD WITH A YELLOW PLASTIC CAP MKD "951" LIES N 87°56'56" E, 331.31 FEET

A 5/8" x 30" IRON ROD WITH A YELLOW PLASTIC CAP MKD "951" LIES S 00°16'26" W, 20.70 FEET

A 5/8" x 30" IRON ROD WITH A YELLOW PLASTIC CAP MKD "951" LIES S 89°19'31" W, 36.51 FEET

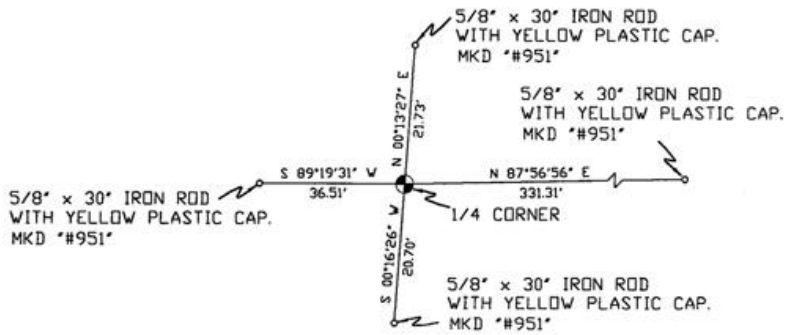
MONUMENT DETAIL

SKETCH



NAD 83/91
OREGON STATE PLANE
INTERNATIONAL FEET

788113.7537
8540163.8687



MONUMENT SET (PROCEDURES AND DESCRIPTION)

NEW ACCESSORIES FROM WHICH

LOCATION AND COMMENTS

FROM INTERSECTION OF HIGHLAND EXTENSION WITH EDWARDS ROAD GO SOUTH 1 MILE THEN GO EAST ACROSS FIELD 1 1/2 MILE TO CORNER.

COMPASS DEC.

FIRM/AGENCY
PRIMM LAND SURVEYING
P.O. BOX 1322
HERMISTON, OREGON 97838

PARTY CHIEF
KEITH P. PRIMM

NOTES

WITNESS
BRIT L. PRIMM

RECEIVED BY

Umatilla County Surveyor

Date 12-01

Rec'd By KR

No. 01-213-9

SURVEYOR'S SEAL

REGISTERED
PROFESSIONAL
LAND SURVEYOR

OREGON
JULY 13, 1999
BRIT L. PRIMM
48509

EXPIRATION DATE:12/31/02