

# OREGON CORNER RESTORATION FORM

SECTION 17 TOWNSHIP 4 NORTH RANGE 29 EAST N-7  
COUNTY : UMATILLA DATE 01-2002

CORNER DESIGNATION

S 1/4 CORNER

- CONDITION REPORT ONLY
- NOT FOUND
- RENEWED
- UNCOVERED
- SURVEYED IN
- REFERENCED

PREVIOUS RENEWALS / SURVEYS, ETC.

ORIGINAL SURVEYOR WAS DAVENPORT 1861 #101. HE SET POST IN A MOUND WITH CHARRED STAKE.

BY SINGLE PROPORTION I SET A 1" X 30" IRON PIPE WITH FLARED BOTTOM AND A 2 3/8" BRASS CAP STAMPED AS BELOW.

MONUMENTS AND ACCESSORIES FOUND: CONDITION AND SOURCE

FOUND A 2 3/8" BRASS CAP STAMPED AS BELOW FROM WHICH:

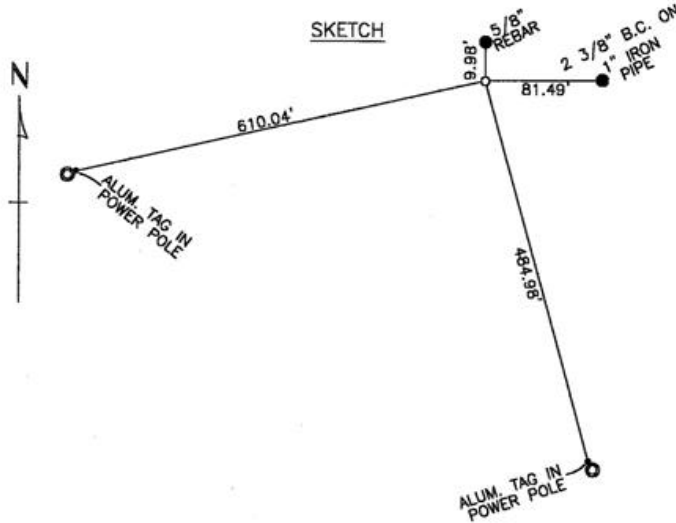
- A 5/8" X 30" IRON REBAR WITH PLASTIC CAP #951 BEARS N 0°06'22" W 9.98 FEET
- A 1" X 30" IRON PIPE WITH 2 3/8" B.C. STAMPED AS ABOVE & W.C. BEARS N 89°39'00" E 81.49 FEET
- AN ALUMINUM TAG #951 IN POWER POLE BEARS S 77°29'27" W 610.04 FEET
- AN ALUMINUM TAG #951 IN POWER POLE BEARS S 15°31'39" E 484.98 FEET

MONUMENT DETAIL



NAD 83/91  
OREGON STATE PLANE  
INTERNATIONAL FEET  
787810.1996  
8529615.2707

SKETCH



MONUMENT SET ( PROCEDURES AND DESCRIPTION )

NA

NEW ACCESSORIES FROM WHICH

LOCATION AND COMMENTS

FROM INTERSECTION OF HIGHLAND AVENUE WITH EDWARDS ROAD, GO SOUTH ON EDWARDS ROAD 1 MILE, THEN WEST ALONG A FARM ROAD 1/2 MILE TO CORNER.

COMPASS DEC.

FIRM/AGENCY  
EDWARDS SURVEYING  
P.O. BOX 763  
HERMISTON, OREGON 97838

PARTY CHIEF  
CURTIS FAVOREL

NOTES

WITNESS  
WALT MUNDELL

SURVEYOR'S SEAL

REGISTERED  
PROFESSIONAL  
LAND SURVEYOR

*G. Dennis Edwards*

OREGON  
JULY 16, 1971  
G. DENNIS EDWARDS  
9 5 1

RECEIVED BY RENEWS 12/31/2003

Umatilla County Surveyors

Date 2-02

Rec'd By KK

No. 02-48-9