

CORNER RESTORATION FORM

Township 4N Range 28E, 29E Section 19, 24 County UMATILLA

State OREGON Date 3/30/2023 Number P-1

Condition Report Only

Corner Designation : 1/4 CORNER: 19, 24

Not Found
 Renewed

Previous Renewals ORIGINAL SOURCE OF CORNER

Surveyed In
 Referenced

ORIGINALLY SURVEYED IN OCT. OF 1860 BY W.B. CAMPBELL

UNDER CONTRACT #95, HE SET A STAKE IN MOUND OF EARTH

1980 KRUMBEIN SET A 2" I.P. W/ 2-1/2" BRASS CAP BY

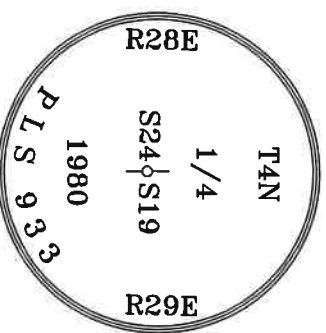
MONUMENT DETAIL

Found Set

SINGLE PROPORTION INST. NO. S-156-C

BASIS OF BEARINGS, NAD 83/91 OREGON STATE PLANE
COORDINATES NORTH ZONE:

NORTHING: 784992.65
EASTING: 8521179.37



Monument & Accessories Set/Found (Procedure and Description)

AT CORNER FOUND A 2 1/2" BRASS CAP 1.2' BELOW ROAD GRADE, COUNTY SURVEY NO. S-156-C

FOUND A ALUMINUM TAG 951 ON P.P. N 08°36' E 230.59', CORNER FORM NO. P1-92-45-C

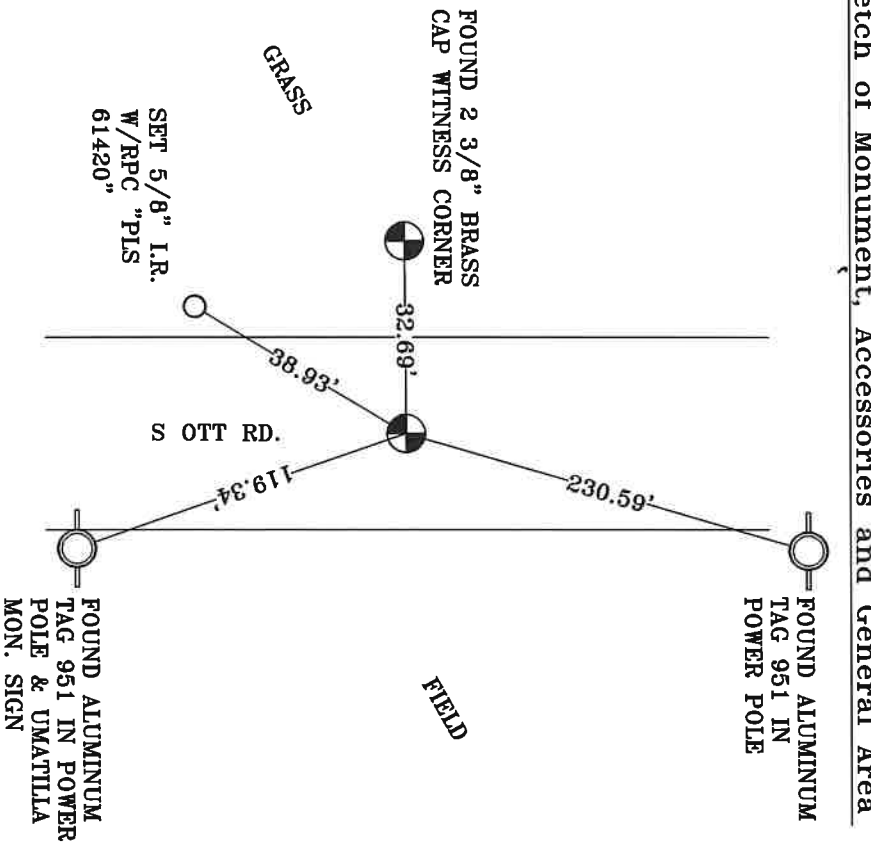
FOUND A 1"X30" I.P. W/ 2 3/8" BRASS CAP "W.C. IS 951" S 89°34'W 32.69', CORNER FORM NO. P1-92-45-C

FOUND A ALUMINUM TAG 951 ON P.P. AND SET UMATILLA SURVEY MON. SIGN S 19°13' E 119.34', CORNER

FORM NO. P1-92-45-C

SET A 5/8" I.R. W/RPC "PLS 61420" 1" BELOW GRADE S 30°59' W 38.93'

Sketch of Monument, Accessories and General Area



**REGISTERED
PROFESSIONAL
LAND SURVEYOR**

OREGON
MAY 10, 2011
LANCE CLARK KING
61420

RENEWALS: 6/30/2023

Agency: **CK3, LLC**
945 W. ORCHARD
HERMISTON OREGON 97838
OFFICE: 541-567-2345
FAX: 541-567-2305
WEB: CK3ILC.NET
Field Book # 0-350

COUNTY SURVEYOR
RECORDING INFO

Received CT

Filed 5/4/23

Survey No. 23-042-C

Drawing No. _____

Index No. P-1