

CORNER RESTORATION FORM

Township 4N Range 29E Section 21, 22 County UMATILLA

State OREGON Date 3/30/2023 Number P-13

Corner Designation : 1/4 CORNER: 21, 22

Condition Report Only

Not Found

Renewed

Surveyed In

Referenced

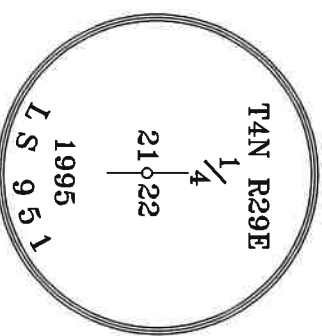
Found Set

Previous Renewals ORIGINAL SOURCE OF CORNER
 ORIGINALLY SURVEYED IN 1861 BY DAVENPORT UNDER
 CONTRACT #101, HE SET A STAKE IN MOUND OF EARTH
 1996 EDWARDS SET A 1"X30" I.P. W/ 2-3/8" BRASS CAP BY
 SINGLE PROPORTION COUNTY SURVEY NO. 95-060-B &
 CORNER FORM NO. P13-95-060-B

MONUMENT DETAIL

BASIS OF BEARINGS, NAD 83/91 OREGON STATE PLANE
 COORDINATES NORTH ZONE:

NORTHING: 785395.57
 EASTING: 8537538.49



Monument & Accessories Set/Found (Procedure and Description)

AT CORNER FOUND A 2 3/8" BRASS CAP & SET UMATILLA MON. SIGN, COUNTY SURVEY NO. 95-060-B &
 CORNER FORM NO. P13-95-060-B

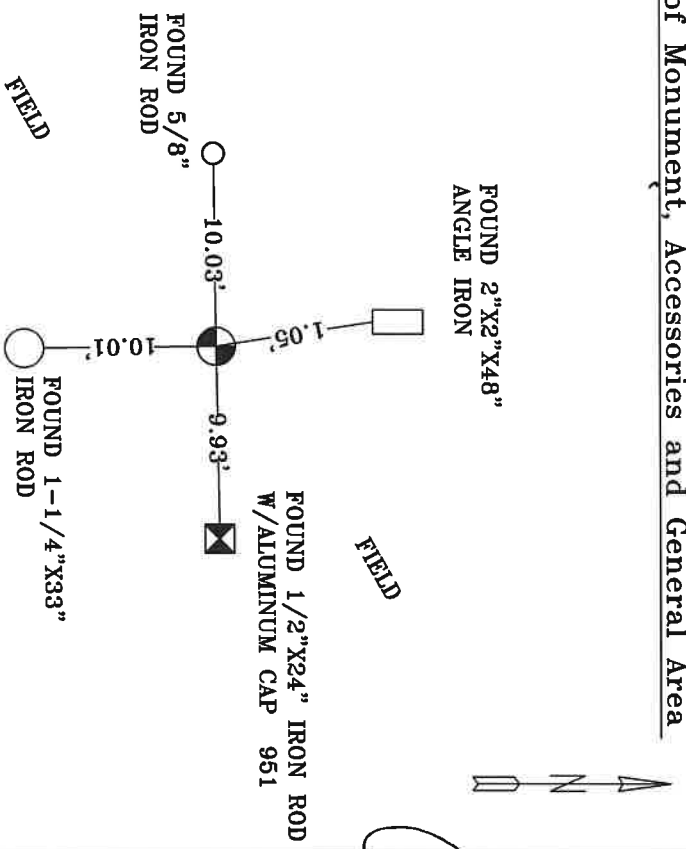
FOUND A 2"X2"X48" ANGLE IRON N 08°25' W 1.05', CORNER FORM NO. P13-95-060-B

FOUND A 1/2"X24" I.R. W/ALUMINUM CAP 951 N 89°04' E 9.93', CORNER FORM NO. P13-95-060-B

FOUND A 1 1/4"X33" I.R. S 00°32' E 10.01', CORNER FORM NO. P13-95-060-B

FOUND A 5/8"X30" I.R. S 89°12' W 10.03', CORNER FORM NO. P13-95-060-B

Sketch of Monument, Accessories and General Area



REGISTERED PROFESSIONAL LAND SURVEYOR

Lance Clark King
 OREGON
 MAY 10, 2011
 LANCE CLARK KING
 61420

RENEWALS: 6/30/2023

Agency: CK3, LLC
 945 W. ORCHARD
 HERMISTON OREGON 97838
 OFFICE: 541-567-2345
 FAX: 541-567-2305
 WEB: CK3ILC.NET
 Field Book # 0-350

COUNTY SURVEYOR RECORDING INFO

Received CT
 Filed 5/4/23
 Survey No. 23-042-C
 Drawing No. _____
 Index No. P-13