

OREGON CORNER RESTORATION FORM

SECTION 23 TOWNSHIP 4 NORTH RANGE 29 EAST P-17

COUNTY : UMATILLA DATE 11-2001

CORNER DESIGNATION

WEST 1/4

- CONDITION REPORT ONLY
- NOT FOUND
- RENEWED
- UNCOVERED
- SURVEYED IN
- REFERENCED

PREVIOUS RENEWALS / SURVEYS, ETC.

ORIGINALLY SURVEYED IN 1860 BY DAVENPORT UNDER CONTRACT #101. HE SET A POST IN A MOUND OF EARTH AND A CHARRED STAKE.

IN 1998 EDWARDS SET A 1"X30" IRON PIPE WITH A 2 3/8" BRASS CAP BY SINGLE PROPORTION.

MONUMENTS AND ACCESSORIES FOUND: CONDITION AND SOURCE

FOUND A 2 3/8" BRASS CAP STAMPED AS BELOW.
FROM WHICH:

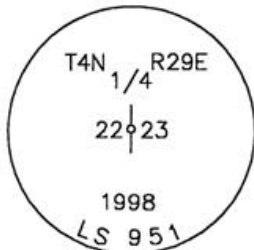
AN ALUMINUM TAG #951 ON A POWER POLE BEARS N 3°09'42" W 62.31 FEET.

AN ALUMINUM TAG #951 IN A 9" LOCUST TREE BEARS S 81°50'08" W 19.07 FEET.

AN ALUMINUM TAG #951 IN A R.R. TIE BRACE POST BEARS S 87°14'15" E 5.24 FEET.

A 5/8"X30" IRON REBAR WITH PLASTIC CAP #951 BEARS S 87°55'32" E 19.43 FEET.

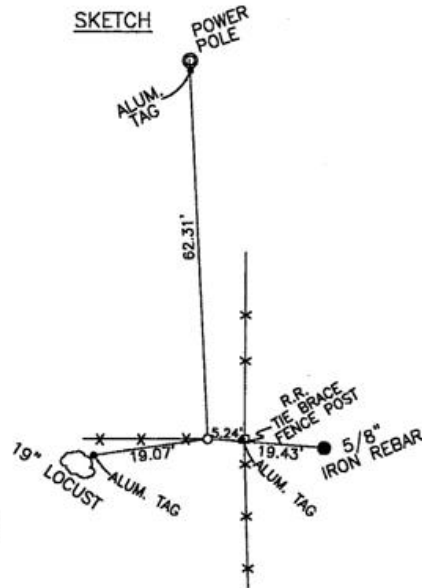
MONUMENT DETAIL



NAD 83/91
OREGON STATE PLANE
INTERNATIONAL FEET
785537.3234
8542853.3823



SKETCH



MONUMENT SET (PROCEDURES AND DESCRIPTION)

NEW ACCESSORIES FROM WHICH

RECEIVED BY

Umatilla County Surveyor

Date 12-01

Rec'd By [Signature]

No. 01-213-9

LOCATION AND COMMENTS

FROM INTERSECTION OF FEEDVILLE RD. & TOBIN LANE, GO NORTH 1/2 MILE TO CORNER.

COMPASS DEC.

FIRM/AGENCY
EDWARDS SURVEYING
P.O. BOX 763
HERMISTON, OREGON 97838

PARTY CHIEF
CURTIS FAVOREL

NOTES

WITNESS
WALT MUNDELL

SURVEYOR'S SEAL

REGISTERED
PROFESSIONAL
LAND SURVEYOR

[Signature]

OREGON
JULY 16, 1971
G. DENNIS EDWARDS
9 5 1
RENEWS 12/31/2001