

CORNER RESTORATION FORM

Township 4N Range 29E Section 22, 23 County UMATILLA

State OREGON Date 3/30/2023 Number P-17

Condition Report Only

Corner Designation : 1/4 CORNER: 22, 23

Not Found

Previous Renewals ORIGINAL SOURCE OF CORNER

Surveved In

ORIGINALLY SURVEYED IN 1860 BY DAVENPORT UNDER

CONTRACT #101, HE SET A STAKE IN MOUND OF EARTH

MONUMENT DETAIL

1998 EDWARDS SET A 1"X30" I.P. W/ 2-3/8" BRASS CAP BY

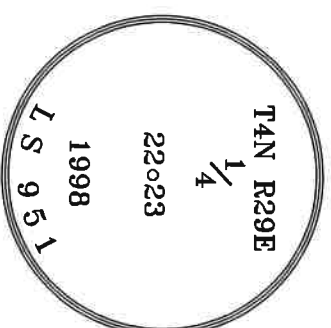
Found Set

SINGLE PROPORTION COUNTY SURVEY NO. 98-213-C &

CORNER FORM NO. P17-98-213-C

BASIS OF BEARINGS, NAD 83/91 OREGON STATE PLANE
COORDINATES NORTH ZONE:

NORTHING: 785537.38
EASTING: 8542853.43



Monument & Accessories Set/Found (Procedure and Description)

AT CORNER FOUND A 1"X30" I.P. W/ 2-3/8" BRASS CAP IN FENCE LINE, COUNTY SURVEY NO. 98-213-C & CORNER FORM NO. P17-98-213-C

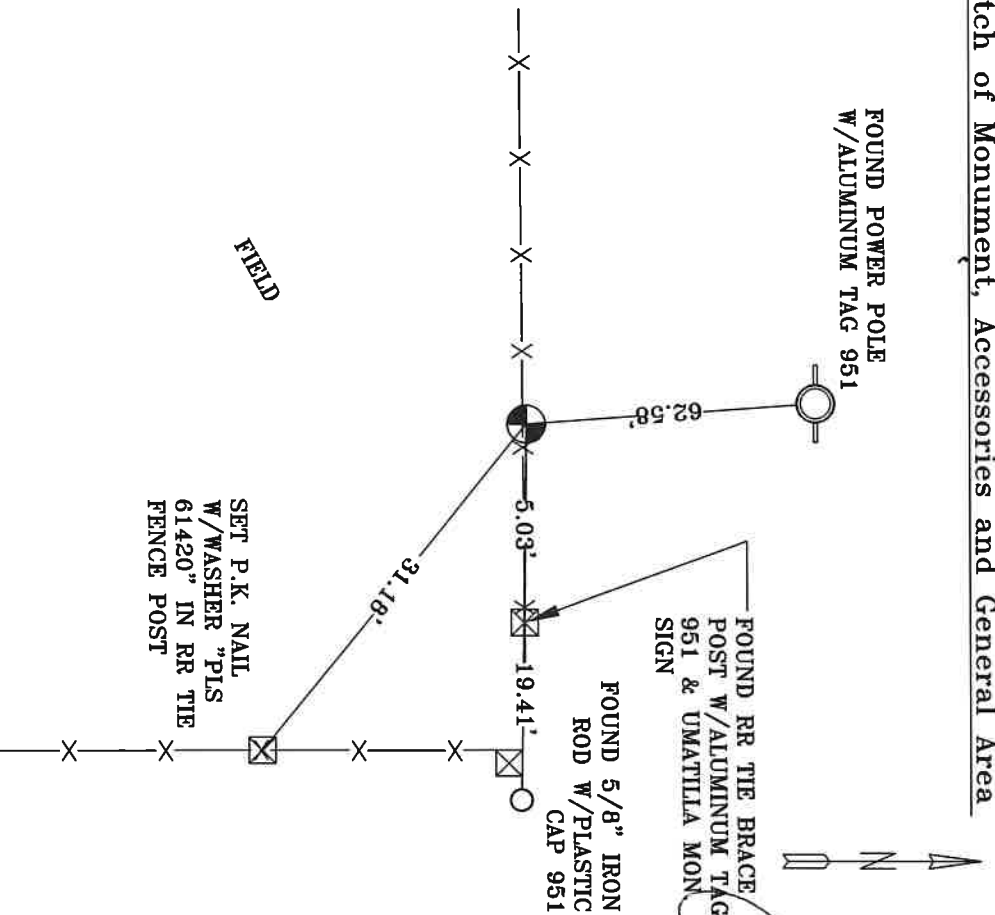
FOUND A ALUMINUM TAG 951 ON P.P. N 04°01' W 62.58', CORNER FORM NO. P17-98-213-C

FOUND A ALUMINUM TAG 951 ON R.R. THE BRACE POST & SET UMATILLA MON. SIGN S 88°25' E 5.03', CORNER FORM NO. P17-98-213-C

FOUND A 5/8" I.R. W/PLASTIC CAP 951 S 88°51' E 19.41', CORNER FORM NO. P17-98-213-C

SET A P.K. NAIL W/WASHER "PLS 61420" IN RXR THE FENCE POST S 25°34' E 31.18'

Sketch of Monument, Accessories and General Area



**REGISTERED
PROFESSIONAL
LAND SURVEYOR**

OREGON
MAY 10, 2011
LANCE CLARK/KING
61420

RENEWALS: 6/30/2023

Agency: **CK3, LLC**
945 W. ORCHARD
HERMISTON OREGON 97838
OFFICE: 541-567-2345
FAX: 541-567-2305
WEB: CK3LLC.NET
Field Book # 0-350

**COUNTY SURVEYOR
RECORDING INFO**

Received CT

Filed 5/4/23

Survey No. 23-042-C

Drawing No. _____

Index No. P-17