

OREGON CORNER RESTORATION FORM

SECTION 23 TOWNSHIP 4 NORTH RANGE 29 EAST P-21

COUNTY : UMATILLA DATE 11-2001

CORNER DESIGNATION

EAST 1/4

- CONDITION REPORT ONLY
- NOT FOUND
- RENEWED
- UNCOVERED
- SURVEYED IN
- REFERENCED

PREVIOUS RENEWALS / SURVEYS, ETC.

ORIGINALLY SURVEYED IN 1861 BY DAVENPORT UNDER CONTRACT #101. HE SET A POST IN A MOUND OF EARTH AND A CHARRED STAKE.

IN 1998 EDWARDS SET A 1"X30" IRON PIPE WITH A 2 3/8" BRASS CAP BY SINGLE PROPORTION STAMPED AS BELOW.

MONUMENTS AND ACCESSORIES FOUND: CONDITION AND SOURCE

FND. EDWARDS 1"X30" IRON PIPE WITH A BRASS CAP STAMPED AS BELOW DISTURBED BY FARMING OPERATIONS.

FROM WHICH:

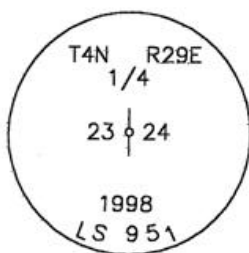
A 5/8" IRON REBAR WITH PLASTIC CAP #951 BEARS S 89°13'31" E 512.69 FEET.

A 3/4" IRON BOLT IN NE COR. PIVOT PAD BEARS S 53°36'03" E 21.17 FEET.

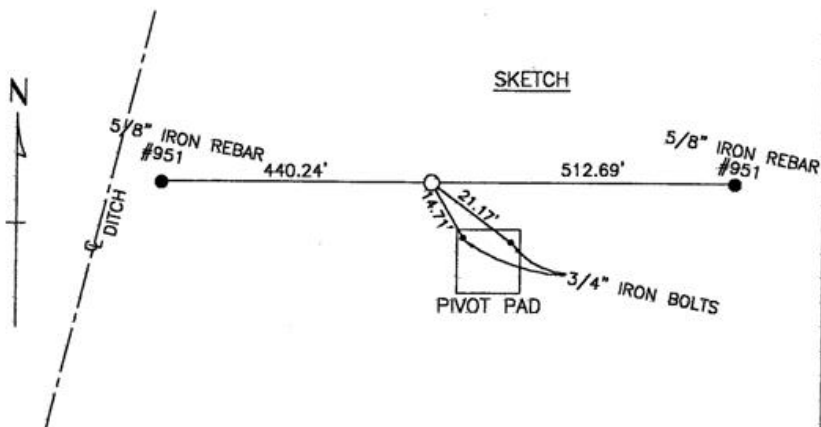
A 3/4" IRON BOLT IN NW COR. PIVOT PAD BEARS S 30°40'25" E 14.71 FEET.

A 5/8" IRON REBAR WITH PLASTIC CAP #951 BEARS S 89°56'54" W 440.24 FEET.

MONUMENT DETAIL



NAD 83/91
OREGON STATE PLANE
INTERNATIONAL FEET
785629.7367
8548141.1098



MONUMENT SET (PROCEDURES AND DESCRIPTION)

FROM THE ABOVE ACCESSORIES I RESET THE DISTURBED MONUMENT 14" BELOW THE SURFACE OF A CULTIVATED FIELD.

NEW ACCESSORIES FROM WHICH

LOCATION AND COMMENTS
20' NW OF CENTER PIVOT.

COMPASS DEC.

FIRM/AGENCY
EDWARDS SURVEYING
P.O. BOX 763
HERMISTON, OREGON 97838

PARTY CHIEF
D. EDWARDS
NOTES

WITNESS
CURTIS J FAVOREL

RECEIVED BY
Umatilla County Surveyor
Date 12-01
Rec'd By KK
Mon 01-213-9

SURVEYOR'S SEAL

REGISTERED
PROFESSIONAL
LAND SURVEYOR

G. Dennis Edwards

OREGON
JULY 16, 1971
G. DENNIS EDWARDS
9 5 1
RENEWS 12/31/2001