

# OREGON CORNER RESTORATION FORM

SECTION 27      TOWNSHIP 4 NORTH      RANGE 29 EAST      R-15

COUNTY : UMATILLA      DATE 8-98

CORNER DESIGNATION

NORTH 1/4

- CONDITION REPORT ONLY
- NOT FOUND
- RENEWED
- UNCOVERED
- SURVEYED IN
- REFERENCED

PREVIOUS RENEWALS / SURVEYS, ETC.

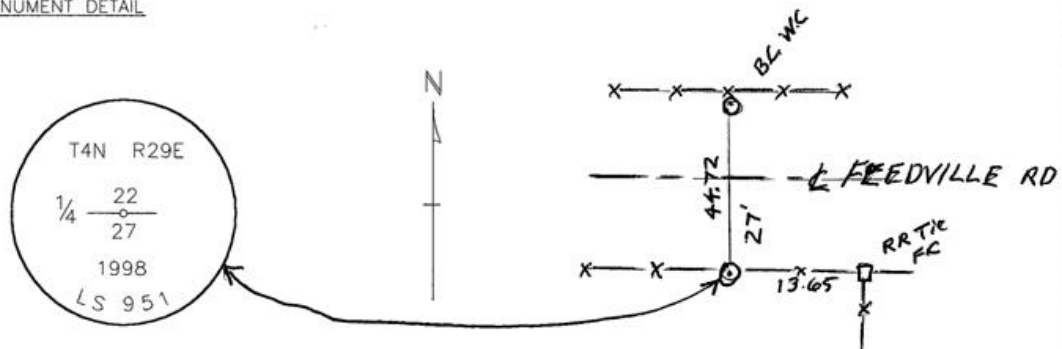
ORIGINALLY SURVEYED IN 1861 BY DAVENPORT UNDER CONTRACT #101. HE SET A POST IN A MOUND OF EARTH AND A CHARRED STAKE.

MONUMENTS AND ACCESSORIES FOUND: CONDITION AND SOURCE

NOTHING

MONUMENT DETAIL

SKETCH



MONUMENT SET ( PROCEDURES AND DESCRIPTION )

BY SINGLE PROPORTION, I SET 1" X 30" IRON PIPE WITH A BRASS CAP STAMPED AS ABOVE, 3" ABOVE THE SURFACE.

NEW ACCESSORIES FROM WHICH

A 5/8" X 30" IRON REBAR WITH PLASTIC CAP #951 LIES N 27°.47'21" W, 49.46 FEET.  
 A 1" X 30" IRON PIPE WITH 2 3/8" BRASS CAP LIES N 00°.17'10" E, 44.72 FEET.  
 AN ALUMINUM TAG #951 IN A RXR TIE FENCE CORNER LIES S 88°.34'20" E, 13.65 FEET.  
 AN ALUMINUM TAG #951 IN A 8" LOCUST TREE LIES S 23°.52'00" W, 24.33 FEET.

LOCATION AND COMMENTS

COMPASS DEC.

SURVEYOR'S SEAL

**RECEIVED BY**

Umatilla County Surveyor

Date 10-98

Rec'd By KK

No. 98-213-C

FIRM/AGENCY  
 EDWARDS SURVEYING  
 P.O. BOX 763  
 HERMISTON, OREGON 97838  
 97838

PARTY CHIEF  
 D. EDWARDS

NOTES

WITNESS  
 RICK SMITH

REGISTERED  
 PROFESSIONAL  
 LAND SURVEYOR

*G. Dennis Edwards*

OREGON  
 JULY 16, 1971  
 G. DENNIS EDWARDS  
 951  
 RENEWS 12/31/99