

CORNER RESTORATION FORM

Township 4N Range 29E Section 22,23,26,27 County UMATILLA

State OREGON Date 3/30/2023 Number R-17

Corner Designation : SECTION CORNER: 22, 23, 26, 27

Condition Report Only

Not Found

Renewed

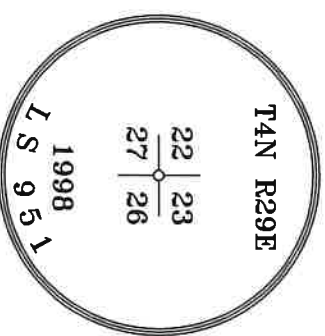
Surveyed In

Referenced

Previous Renewals ORIGINAL SOURCE OF CORNER
 ORIGINALLY SURVEYED IN 1860 BY DAVENPORT UNDER
 CONTRACT #101, HE SET A STAKE IN MOUND OF EARTH
 1975 PALMER SET EXR SPIKE COUNTY SURVEY NO. 03-272-C
 1998 EDWARDS SET A 5/8" I.R. W/2" ALUMINUM CAP 20.00' N
 OF A 2 1/2" B.C. COUNTY SURVEY NO. 98-213-C &
 CORNER FORM NO. R17-98-213-C

MONUMENT DETAIL

Found Set



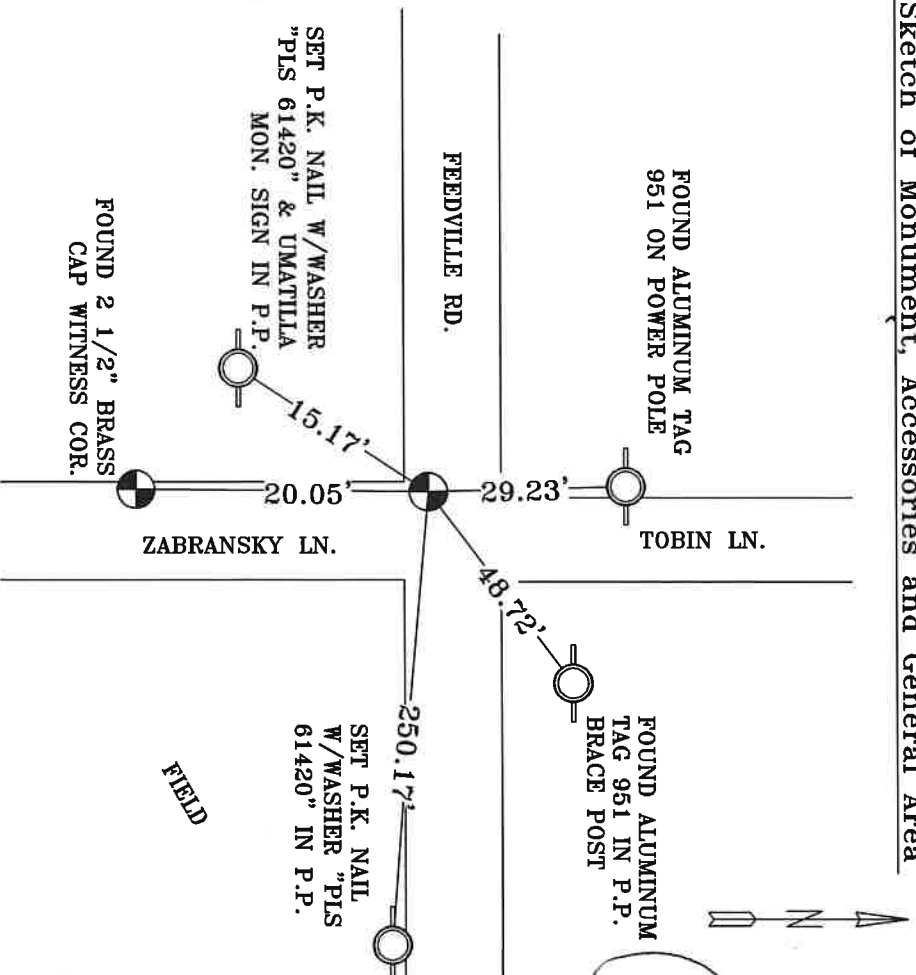
BASIS OF BEARINGS, NAD 83/91 OREGON STATE PLANE
 COORDINATES NORTH ZONE:

NORTHING: 782887.93
 EASTING: 8542885.20

Monument & Accessories Set/Found (Procedure and Description)

- AT CORNER FOUND A 2" ALUMINUM CAP 0.5" BELOW PAVEMENT PARTIALLY READABLE, MONUMENT RESTAMPED & REFRESHED, COUNTY SURVEY NO. 98-213-C & CORNER FORM NO. R17-98-213-C
- FOUND A ALUMINUM TAG 951 ON POWER POLE N 01°09' E 29.23', CORNER FORM NO. R17-98-213-C
- FOUND A ALUMINUM TAG 951 ON BRACE POST N 54°11' E 48.72', CORNER FORM NO. R17-98-213-C
- FOUND A 2 1/2" BRASS CAP W.C. UNREADABLE S 00°54' E 20.05' ORIGIN UNKNOWN
- SET A P.K. NAIL W/WASHER "PLS 61420" IN P.P. S 88°07' E 250.17'
- SET A P.K. NAIL W/WASHER "PLS 61420" & UMATILLA MON. SIGN IN P.P. S 30°52' W 15.17'

Sketch of Monument, Accessories and General Area



**REGISTERED
 PROFESSIONAL
 LAND SURVEYOR**

Lance Clark King
OREGON
MAY 10, 2011
LANCE CLARK KING
61420

RENEWALS: 6/30/2023

Agency: **CK3, LLC**
 945 W. ORCHARD
 HERMISTON OREGON 97838
 OFFICE: 541-567-2345
 FAX: 541-567-2305
 WEB: CK3LLC.NET
 Field Book # 0-350

COUNTY SURVEYOR
 RECORDING INFO

Received CT

Filed 5/4/23

Survey No. 23-042-C

Drawing No. _____

Index No. R-17