

OREGON CORNER RESTORATION FORM

SECTION 23 TOWNSHIP 4 NORTH RANGE 29 EAST R-19

COUNTY : UMATILLA DATE 11-2001

CORNER DESIGNATION

SOUTH 1/4

- CONDITION REPORT ONLY
- NOT FOUND
- RENEWED
- UNCOVERED
- SURVEYED IN
- REFERENCED

PREVIOUS RENEWALS / SURVEYS, ETC.

ORIGINALLY SURVEYED IN 1861 BY DAVENPORT UNDER CONTRACT #101. HE SET A POST IN A MOUND OF EARTH AND A CHARRED STAKE.

ASCHER FOUND A 5/8" IRON REBAR IN 1967.

IN 1998 EDWARDS PLACED A 2" ALUMINUM CAP ON A 5/8" IRON REBAR.

MONUMENTS AND ACCESSORIES FOUND: CONDITION AND SOURCE

FOUND A 2" ALUMINUM CAP 2" BELOW PAVED SURFACE.

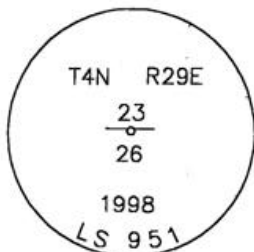
FROM WHICH:

AN ALUMINUM TAG #951 ON A R.R. TIE FENCE POST BEARS N 43°43'59" E 30.57 FEET.

AN ALUMINUM TAG #951 ON A POWER POLE BEARS S 25°44'29" E 50.58 FEET.

AN ALUMINUM TAG #951 ON A POWER POLE BEARS S 83°57'27" W 162.44 FEET.

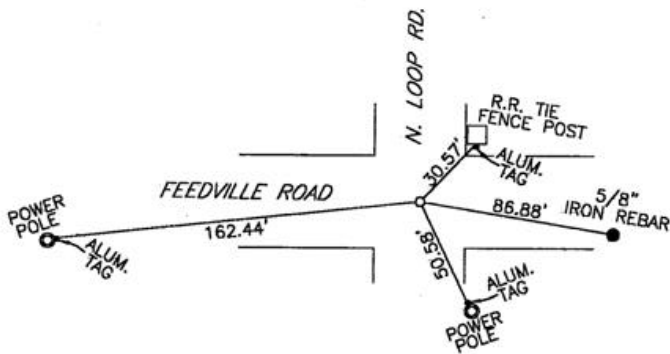
MONUMENT DETAIL



NAD 83/91
 OREGON STATE PLANE
 INTERNATIONAL FEET
 782939.5368
 8545548.9283



SKETCH



MONUMENT SET (PROCEDURES AND DESCRIPTION)

NEW ACCESSORIES FROM WHICH

A 5/8"x30" IRON REBAR WITH PLASTIC CAP #48509 BEARS S 80°34'58" E 86.88 FEET

RECEIVED BY

Umatilla County Surveyors

Date 12-01

Rec'd By KK

No. 01-213-9

SURVEYOR'S SEAL

LOCATION AND COMMENTS
AT THE INTERSECTION OF LOOP ROAD AND FEEDVILLE ROAD.

COMPASS DEC.

FIRM/AGENCY
 EDWARDS SURVEYING
 P.O. BOX 763
 HERMISTON, OREGON 97838

PARTY CHIEF
 CURTIS FAVOREL

NOTES

WITNESS
 WALT MUNDELL

REGISTERED
 PROFESSIONAL
 LAND SURVEYOR

OREGON
 JULY 16, 1971
 G. DENNIS EDWARDS
 9 5 1
 RENEWS 12/31/2001