

# CORNER RESTORATION FORM

Township 4N Range 29E Section 23,24,25,26 County UMATILLA

State OREGON Date 3/30/2023 Number R-21

Corner Designation : SECTION CORNER: 23, 24, 25, 26

Previous Renewals ORIGINAL SOURCE OF CORNER

ORIGINALLY SURVEYED IN 1861 BY DAVENPORT UNDER CONTRACT #101, HE SET A STAKE IN MOUND OF EARTH
1975 PALMER SET A BRASS CAP COUNTY SURVEY NO. 03-272-C
1998 EDWARDS SET A 5/8" I.R. W/2"ALUMINUM CAP BY DOUBLE PROPORTION COUNTY SURVEY NO. 98-213-C & CORNER FORM NO. R21-98-213-C

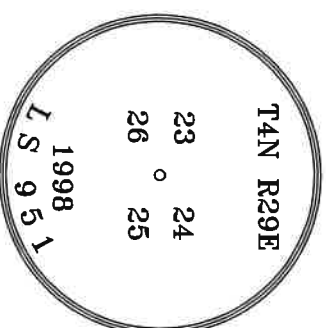
Condition Report Only  
 Not Found  
 Renewed  
 Surveyed In  
 Referenced

### MONUMENT DETAIL

Found  Set

BASIS OF BEARINGS, NAD 83/91 OREGON STATE PLANE  
 COORDINATES NORTH ZONE:

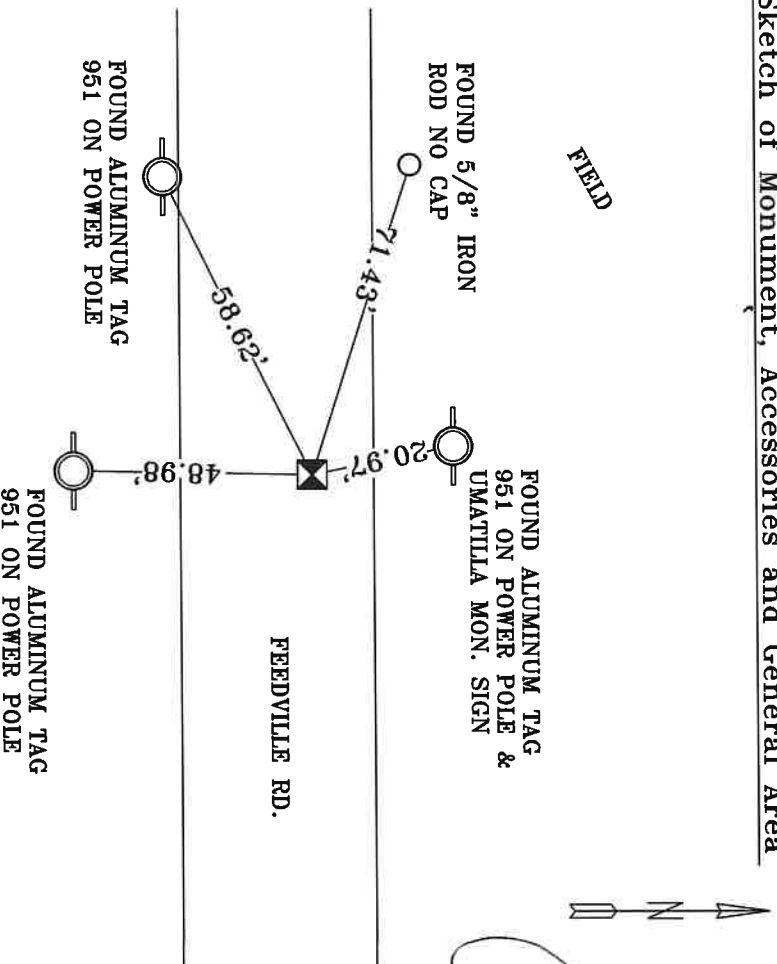
NORTHING: 782988.07  
 EASTING: 8548173.63



Monument & Accessories Set/Found (Procedure and Description)

- AT CORNER FOUND A 2" ALUMINUM CAP 1/2" BELOW PAVEMENT PARTIALLY READABLE, RESTAMPED & REFRESHED MONUMENT, COUNTY SURVEY NO. 98-213-C & CORNER FORM NO. R21-98-213-C
- FOUND A 5/8" I.R. W/PLASTIC CAP HALF BROKE OFF N 78°57' W 71.43', CORNER FORM NO. R21-98-213-C
- FOUND A ALUMINUM TAG 951 ON P.P. S 56°44' W 58.62', CORNER FORM NO. R21-98-213-C
- FOUND A ALUMINUM TAG 951 ON P.P. S 01°04' W 48.98', CORNER FORM NO. R21-98-213-C
- FOUND A ALUMINUM TAG 951 ON P.P. & SET UMATILLA MON. SIGN N 09°57' W 20.97', CORNER FORM NO. R21-98-213-C

### Sketch of Monument, Accessories and General Area



**REGISTERED PROFESSIONAL LAND SURVEYOR**

*Jane Clark*  
**OREGON**  
 MAY 10, 2011  
 LANCE CLARK RING  
 61420

**RENEWALS: 6/30/2023**

Agency: **CK3, LLC**  
 945 W. ORCHARD  
 HERMISTON OREGON 97838  
 OFFICE: 541-567-2345  
 FAX: 541-567-2305  
 WEB: CK3LLC.NET  
 Field Book # 0-350

**COUNTY SURVEYOR RECORDING INFO**

Received CT  
 Filed 5/4/23  
 Survey No. 23-042-C  
 Drawing No. \_\_\_\_\_  
 Index No. R-21