

CORNER RESTORATION FORM

Township 4N Range 29E Section 20,21,28,29 County UMATILLA

State OREGON Date 3/30/2023 Number R-9

Corner Designation : SECTION CORNER: 20, 21, 28, 29

Condition Report Only

Previous Renewals ORIGINAL SOURCE OF CORNER

Not Found
 Renewed
 Surveyed In
 Referenced

ORIGINALLY SURVEYED IN 1861 BY DAVENPORT UNDER
 CONTRACT #101, HE SET A STAKE IN MOUND OF EARTH

MONUMENT DETAIL

Found Set

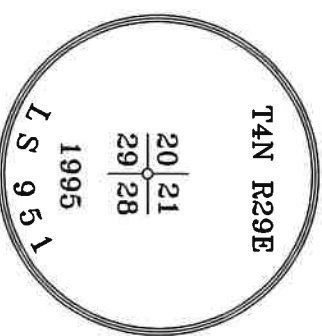
1995 EDWARDS SET A 1"X30" I.P. W/ 2-3/8" B.C. 1" BELOW

SURFACE BY PROPORTION E-W AND BY JUDGEMENT CALL

COUNTY SURVEY NO. 95-060-B & CORNER FORM NO.
 R9-95-060-B

BASIS OF BEARINGS, NAD 83/91 OREGON STATE PLANE
 COORDINATES NORTH ZONE:

NORTHING: 782568.07
 EASTING: 8532350.98



Monument & Accessories Set/Found (Procedure and Description)

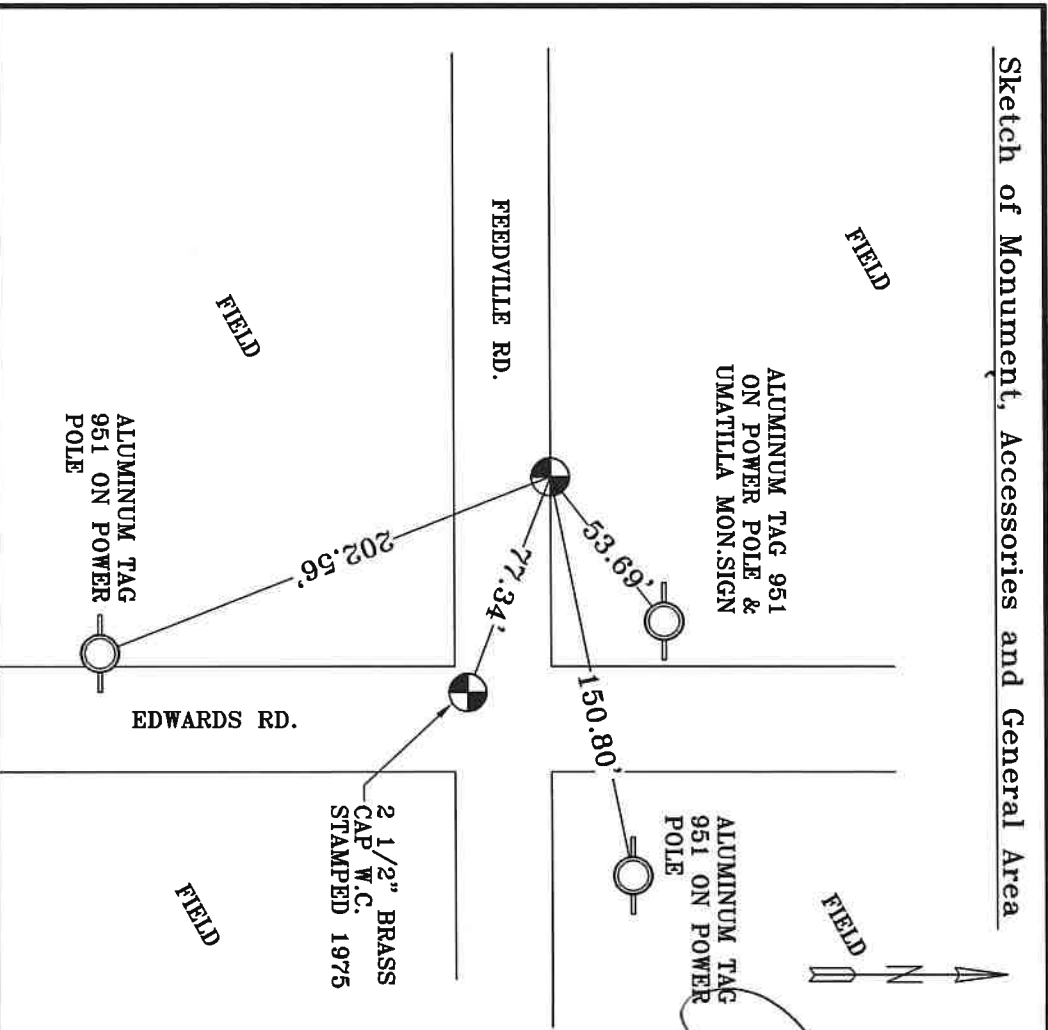
AT CORNER FOUND A 2 3/8" BRASS CAP "1S 951", COUNTY SURVEY NO. 95-060-B, CORNER FORM NO. R9-95-060-B

FOUND A 2 1/2" B.C. STAMPED "1975" 3" BELOW ASPHALT S 72°21' E 77.34', COUNTY SURVEY 03-272-C

FOUND A ALUMINUM TAG 1S 951 ON POWER POLE & UMATILLA MON. SIGN N 67°37' E 53.69', CORNER FORM NO. R9-02-48-G

FOUND A ALUMINUM TAG 951 ON POWER POLE N 81°52' E 150.80', CORNER FORM NO. R9-02-48-G
 FOUND A ALUMINUM TAG 951 ON POWER POLE S 14°25' E 202.56', CORNER FORM NO. R9-02-48-G

Sketch of Monument, Accessories and General Area



**REGISTERED
 PROFESSIONAL
 LAND SURVEYOR**

Lance Clark King
OREGON
MAY 10, 2011
LANCE CLARK KING
61420

RENEWALS: 6/30/2023

Agency: **CK3, LLC**
 945 W. ORCHARD
 HERMISTON OREGON 97838
 OFFICE: 541-567-2345
 FAX: 541-567-2305
 WEB: CK3LLC.NET
 Field Book # 0-350

**COUNTY SURVEYOR
 RECORDING INFO**

Received CT
 Filed 5/4/23
 Survey No. 23-042-C
 Drawing No. _____
 Index No. R-9