

# CORNER RESTORATION FORM

Township 4N Range 28E, 29E Section 25, 30 County UMATILLA

State OREGON Date 3/30/2023 Number T-1

Corner Designation : 1/4 CORNER: 25, 30

Condition Report Only

Not Found

Renewed

Surveyed In

Referenced

Previous Renewals ORIGINAL SOURCE OF CORNER

ORIGINALLY SURVEYED IN 1860 BY W.B. CAMPBELL UNDER

CONTRACT #95, HE SET A STAKE IN MOUND OF EARTH

1954 HIGGINS SET A 1/2" I.R. COUNTY SURVEY Q-1327-AX

1980 KRUMBEIN REPLACED 1/2" I.R. W/ 2 1/2" BRASS CAP

COUNTY SURVEY NO. S-156-C

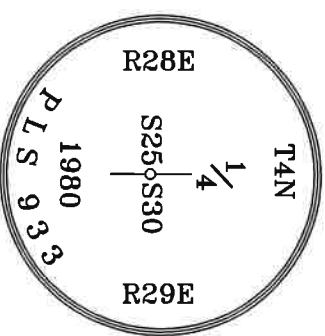
### MONUMENT DETAIL

Found  Set

BASIS OF BEARINGS, NAD 83/91 OREGON STATE PLANE  
COORDINATES NORTH ZONE:

NORTHING: 779725.85

EASTING: 8521269.74



Monument & Accessories Set/Found (Procedure and Description)

AT CORNER FOUND A 2 1/2" BRASS CAP 1' BELOW ASPHALT, COUNTY SURVEY NO. S-156-C

FOUND A 5/8" IRON ROD W/YELLOW PLASTIC CAP "PLS IS 48509" S 88°35' W 18.03', CORNER FORM NO. T1-02-049-G

T1-02-049-G

FOUND A ALUMINUM TAG 951 ON CEDAR FENCE POST & UMATILLA MON. SIGN S 88°42' W 18.38', CORNER FORM NO. T1-92-45-C

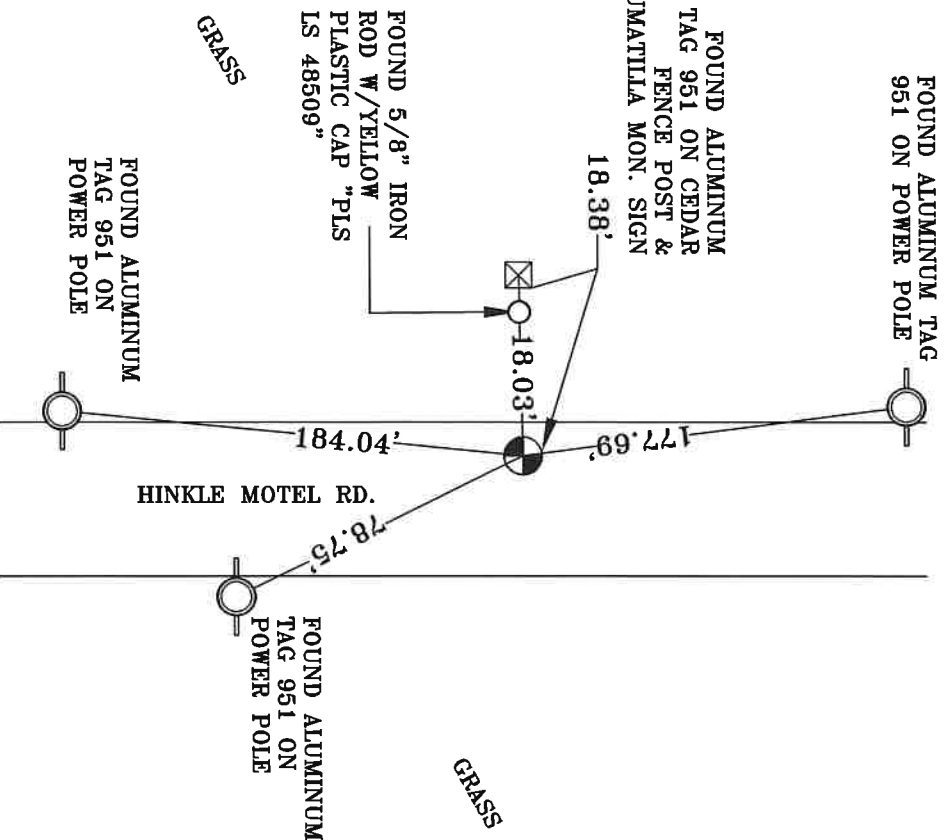
FORM NO. T1-92-45-C

FOUND A ALUMINUM TAG 951 ON POWER POLE N 07°02' W 177.69', CORNER FORM NO. T1-92-45-C

FOUND A ALUMINUM TAG 951 ON POWER POLE S 26°14' E 78.75', CORNER FORM NO. T1-92-45-C

FOUND A ALUMINUM TAG 951 ON POWER POLE S 04°37' W 184.04', CORNER FORM NO. T1-92-45-C

### Sketch of Monument, Accessories and General Area



**REGISTERED  
PROFESSIONAL  
LAND SURVEYOR**

**OREGON**  
MAY 10, 2011  
LANCE CLARK KING  
61420

**RENEWALS: 6/30/2023**

Agency:

CK3, LLC  
945 W. ORCHARD  
HERMISTON OREGON 97838  
OFFICE: 541-567-2345  
FAX: 541-567-2305  
WEB: CK3LLC.NET  
Field Book # 0-350

COUNTY SURVEYOR  
RECORDING INFO

Received CT

Filed 5/4/23

Survey No. 23-042-C

Drawing No. \_\_\_\_\_

Index No. T-1