

OREGON CORNER RESTORATION FORM

SECTION 25 TOWNSHIP 4 NORTH RANGE 29 EAST T-21

COUNTY : UMATILLA DATE 11-2001

CORNER DESIGNATION

WEST 1/4

- CONDITION REPORT ONLY
- NOT FOUND
- RENEWED
- UNCOVERED
- SURVEYED IN
- REFERENCED

PREVIOUS RENEWALS / SURVEYS, ETC.

ORIGINALLY SURVEYED IN 1861 BY DAVENPORT UNDER CONTRACT #101. HE SET A POST IN A MOUND OF EARTH AND A CHARRED STAKE.

IN 1998 EDWARDS SET A 1"X30" IRON PIPE WITH A 2 3/8" BRASS CAP BY SINGLE PROPORTION.

MONUMENTS AND ACCESSORIES FOUND: CONDITION AND SOURCE

FOUND A 2 3/8" BRASS CAP ON A 1" IRON PIPE STAMPED AS BELOW.
FROM WHICH:

A 4" ALUMINUM IRRIGATION STAND PIPE BEARS N 84°52'10" W 52.06 FEET.

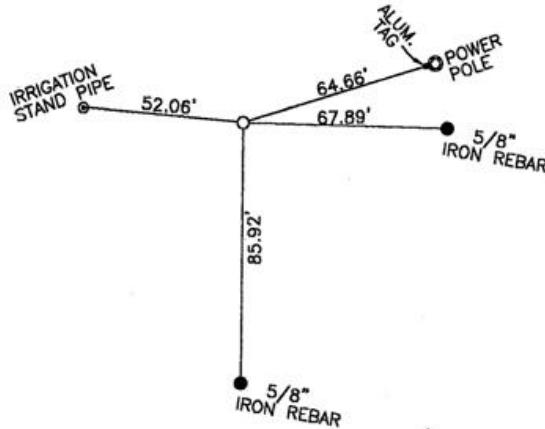
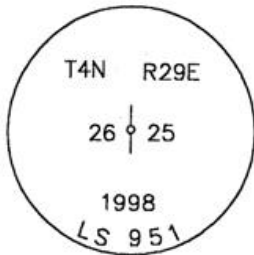
AN ALUMINUM TAG #951 IN A POWER POLE BEARS N 73°16'25" E 64.66 FEET.

A 5/8"X30" IRON REBAR WITH PLASTIC CAP #951 BEARS S 88°24'15" E 67.89 FEET.

A 5/8"X30" IRON REBAR WITH PLASTIC CAP #951 BEARS S 0°21'45" W 85.92 FEET.

SKETCH

MONUMENT DETAIL



NAD 83/91
 OREGON STATE PLANE
 INTERNATIONAL FEET
 780346.2777
 8548199.4864

MONUMENT SET (PROCEDURES AND DESCRIPTION)

NEW ACCESSORIES FROM WHICH

COMPASS DEC.

LOCATION AND COMMENTS
 FROM THE INTERSECTION OF LOOP
 & FEEDVILLE ROADS, CORNER LIES
 1/2 MILE EAST & 1/2 MILE
 SOUTH.

FIRM/AGENCY
 EDWARDS SURVEYING
 P.O. BOX 763
 HERMISTON, OREGON 97838

PARTY CHIEF
 CURTIS FAVOREL

NOTES

RECEIVED BY

WITNESS Umatilla County Surveyor

WALT MUND... Date 12-01

Rec'd By KR

No. 01-213-9

SURVEYOR'S SEAL

REGISTERED
 PROFESSIONAL
 LAND SURVEYOR

G. Dennis Edwards

OREGON
 JULY 16, 1971
 G. DENNIS EDWARDS
 9 5 1

RENEWS 12/31/2001