

OREGON CORNER RESTORATION FORM

Section 33 Township 4 N Range 29 E

County UMATILLA Date 3/95

V-11

CORNER DESIGNATION

N 1/4 COR

- Condition Report Only
- Not Found
- Renewed
- Unrecorded
- Surveyed In
- Referenced Out

Previous Renewals/Surveys, etc. ORIG SUR. DAVENPORT 1861 # 101

He set a post in mound with charred stake

Krumbein set B.C. & B.C. W.C. in 1993

Monument(s) & Accessories Found: (Condition and Source)

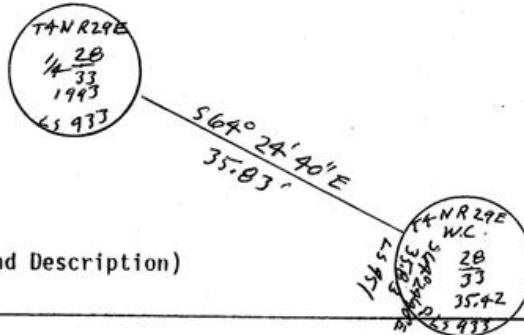
Find 2 3/8" B.C. stamped as below 3" Below surface

Find 2 3/8" B.C. W.C. S 69° 24' 40" E 35.83 Feet (35.42)

I added My info to B.C. facing Corner

Monument Detail

Sketch



Monument Set (Procedures and Description)

SEE MY 1994-1 COUNTY PUBLIC MONUMENTATION SUR.

New Accessories

Alum tag #951 in RR tie F. Post Bears N 26° 10' 50" E 24.28 Ft

Alum tag #951 in P. Pole " N 72° 52' 50" E 70.82 Ft.

" " " in Fence Post " S 89° 29' 30" W 18.04 Ft.

Location & Comments

From Intersection of Compass Declination \_\_\_\_\_

Harding Ave & Edwards Firm/Agency EDWARDS

Rd Go E on Harding SURVEYING

1/2 Mile then go Address P. Box 763

Non Rd 1/2 Mile to Cor. HERMISTON, OR 97838

Party Chief D. EDWARDS

Notes \_\_\_\_\_

Witness J. COPPOCK

Surveyor's Seal

REGISTERED  
PROFESSIONAL  
LAND SURVEYOR

*G. Dennis Edwards*

OREGON  
JULY 16, 1971  
G. DENNIS EDWARDS  
951

RENEWS 12/31/95

RECEIVED BY

Umatilla County Surveyor

Date \_\_\_\_\_

Rec'd By \_\_\_\_\_

No. 95-60-B