

OREGON CORNER RESTORATION FORM

SECTION 25 TOWNSHIP 4 NORTH RANGE 29 EAST V-23
 COUNTY : UMATILLA DATE 8-98

CORNER DESIGNATION

S 1/4

CONDITION REPORT ONLY
 NOT FOUND
 RENEWED
 UNCOVERED
 SURVEYED IN
 REFERENCED

PREVIOUS RENEWALS / SURVEYS, ETC.

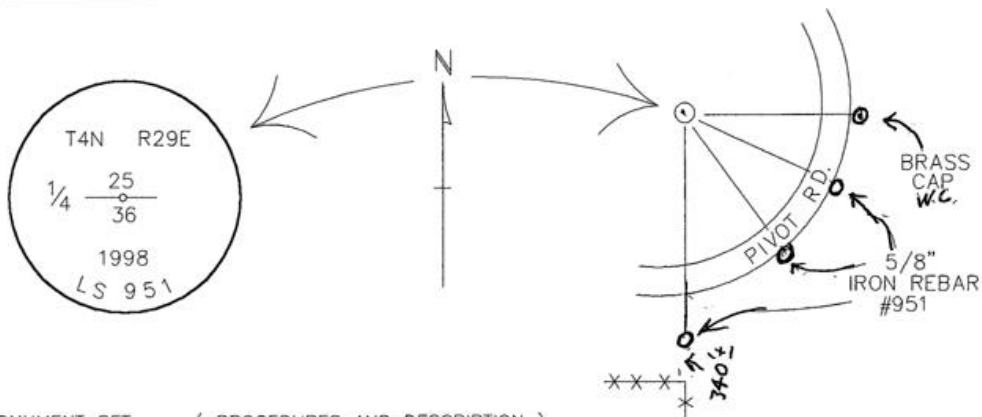
ORIGINALLY SURVEYED IN 1861 BY DAVENPORT UNDER CONTRACT #101. HE SET A POST IN A MOUND OF EARTH AND A CHARRED STAKE.

MONUMENTS AND ACCESSORIES FOUND: CONDITION AND SOURCE

NOTHING

SKETCH

MONUMENT DETAIL



MONUMENT SET (PROCEDURES AND DESCRIPTION)

BY SINGLE PROPORTION I SET A 1" X 30" IRON PIPE WITH A 2 3/8" BRASS CAP STAMPED AS ABOVE, 20" BELOW THE SURFACE OF A CULTIVATED FIELD.

NEW ACCESSORIES FROM WHICH

A 5/8" X 30" IRON REBAR WITH PLASTIC CAP #951 LIES S 0°.21'50" E, 977.30 FEET.
 A 5/8" X 30" IRON REBAR WITH PLASTIC CAP #951 LIES S 43°.57'48" E, 577.25 FEET.
 A 5/8" X 30" IRON REBAR WITH PLASTIC CAP #951 LIES S 69°.38'56" E, 517.09 FEET.
 A 1" X 30" IRON PIPE WITH A 2 3/8" BRASS CAP LIES N 89°.53'45" E, 533.26 FEET.

LOCATION AND COMMENTS

COMPASS DEC.

SURVEYOR'S SEAL

FIRM/AGENCY
 EDWARDS SURVEYING
 P.O. BOX 763
 HERMISTON, OREGON 97838
 97838

PARTY CHIEF
 D. EDWARDS

NOTES

WITNESS
 RICK SMITH

RECEIVED BY
 Umatilla County Surveyor
 Date 10-98
 Rec'd By KK
 No. 98-213-C

REGISTERED
 PROFESSIONAL
 LAND SURVEYOR

Dennis Edwards

OREGON
 JULY 16, 1971
 G. DENNIS EDWARDS
 951
 RENEWS 12/31/99