

# OREGON CORNER RESTORATION FORM

SECTION 28,29,32,33 TOWNSHIP 4 NORTH RANGE 29 EAST V-9  
 COUNTY : UMATILLA DATE 01/02

CORNER DESIGNATION

SECTION CORNER

- CONDITION REPORT ONLY
- NOT FOUND
- RENEWED
- UNCOVERED
- SURVEYED IN
- REFERENCED

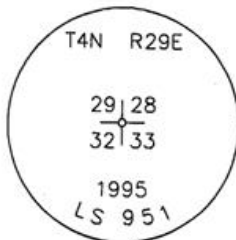
PREVIOUS RENEWALS / SURVEYS, ETC.

ORIGINALLY SURVEYED IN 1861 BY DAVENPORT UNDER CONTRACT #101. HE SET A POST IN A MOUND OF EARTH AND A CHARRED STAKE.  
 IN 1995 EDWARDS SET A 5/8" x 30" IRON ROD WITH A 2 ALUM. CAP , STAMPED AS BELOW.

MONUMENTS AND ACCESSORIES FOUND: CONDITION AND SOURCE

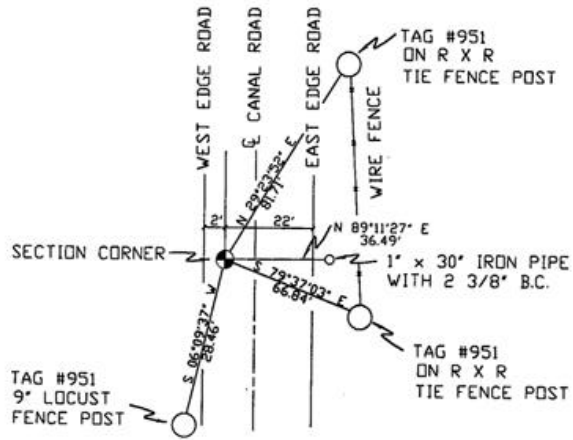
AN ALUMINUM TAG # 951 ON A R X R TIE FENCE POST LIES N 29°23'52" E, 81.71 FEET.  
 AN ALUMINUM TAG # 951 ON A R X R TIE FENCE POST LIES S 79°37'03" E, 66.84 FEET.  
 AN ALUMINUM TAG # 951 ON A 9" LOCUST FENCE POST LIES S 06°09'37" W, 28.46 FEET.  
 A 1" x 30" IRON PIPE WITH A 2 3/8" BRASS CAP LIES N 89°11'27" E, 36.49 FEET.

MONUMENT DETAIL



NAD 83/91  
 OREGON STATE PLANE  
 INTERNATIONAL FEET  
 777291.3621  
 8532436.7839

SKETCH



MONUMENT SET ( PROCEDURES AND DESCRIPTION )

NEW ACCESSORIES FROM WHICH

LOCATION AND COMMENTS

FROM INTERSECTION OF HARDING AVE. WITH EDWARDS ROAD GO NORTH ON EDWARDS 1/2 MILE TO CORNER.

COMPASS DEC.

FIRM/AGENCY

PRIMM LAND SURVEYING  
 P.O. BOX 1322  
 HERMISTON, OREGON 97838

PARTY CHIEF  
 KEITH P. PRIMM

NOTES

WITNESS  
 BRIT L. PRIMM

RECEIVED BY

Umatilla County Surveyor

Date 2-02

Rec'd By KK

No. 02-049-g

SURVEYOR'S SEAL

REGISTERED  
 PROFESSIONAL  
 LAND SURVEYOR

*Brit L. Primm*  
 OREGON  
 JULY 13, 1999  
 BRIT L. PRIMM  
 48509

EXPIRATION DATE: 12/31/02